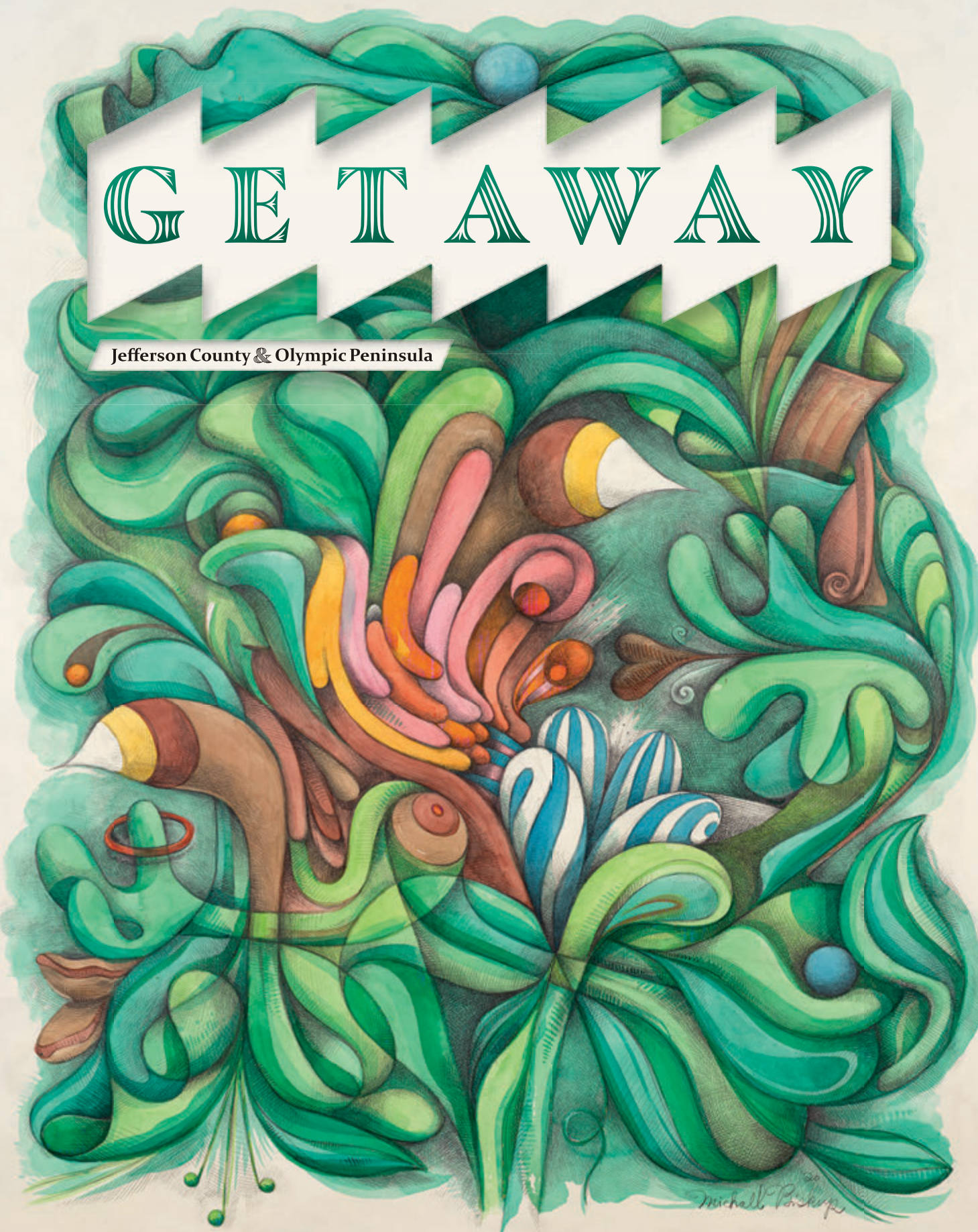


# GETAWAY

Jefferson County & Olympic Peninsula



Michell Poiskrup

THE  
**BISHOP**

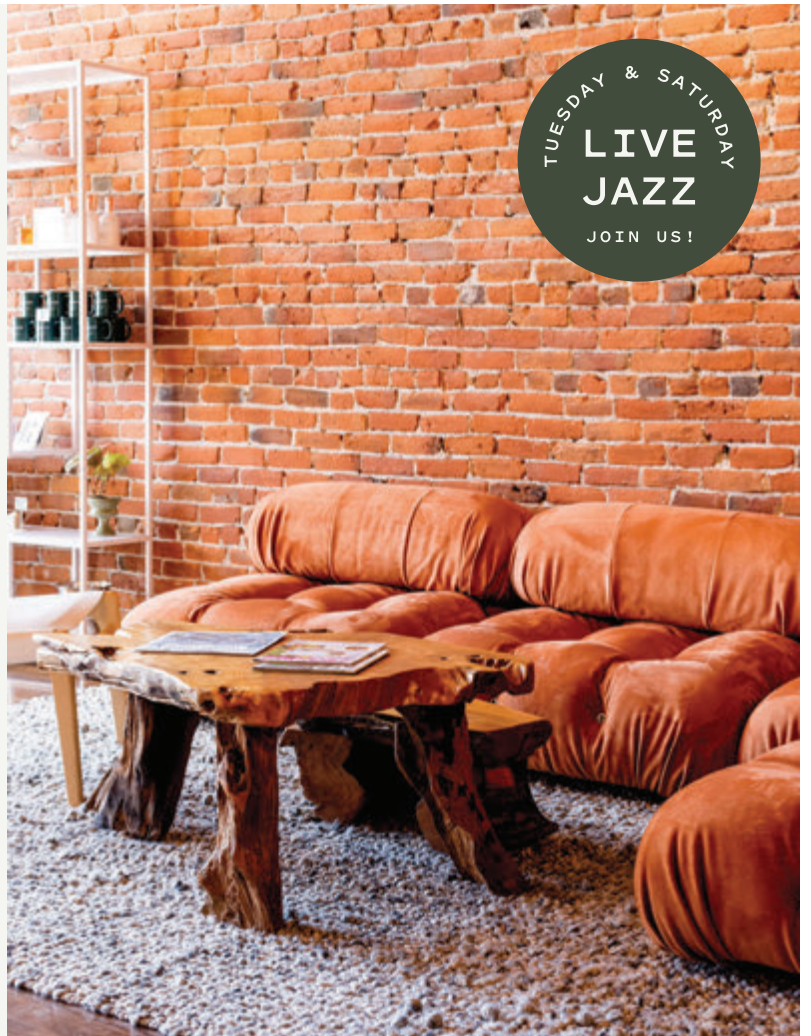
HOTEL

Welcome to the historic  
Bishop Hotel in Port  
Townsend, WA. An all-suite  
boutique hotel featuring  
an organic wine bar and  
courtyard café. We can't  
wait to host you.

—◇—  
BISHOP BLOCK

✂  
**BOTTLE  
SHOP**

AND GARDEN



[THEBISHOPHOTEL.COM](http://THEBISHOPHOTEL.COM) / (360) 302-6984

# LEADER STAFF

**PUBLISHER**

Lloyd Mullen

**ASSOCIATE PUBLISHER**

Laura Jean Schneider

**EDITOR**

Brian Kelly

**NEWSROOM**

James Sloan  
Anna Tallarico  
Cate Winters

**PRODUCTION & DESIGN**

Rainier Powers  
Shaylee Richards  
Meg Visger

**MARKETING**

Cyrus Gubelman  
Kathy Paxton  
Samantha Vinot

**FRONT OFFICE**

Vicki Kirn

**CIRCULATION**

Robert Lyons

**COVER ARTWORK**

Mike Biskup



226 Adams Street  
Port Townsend, WA 98368  
360-385-2900  
www.ptleader.com



# CONTENTS

**WELCOME TO THE PENINSULA**

4

About the Artist ..... 4  
From the Publisher ..... 5  
Know Before You Go .....7  
Jeffco's Best Grab-N-Go's.....16

**ACCOMMODATIONS**

10

Lodging Matrix ..... 10-11  
Lodging On The Go ..... 13  
County-Wide Camping..... 56

**LOCAL COMMUNITIES**

19

Cities & Towns ..... 19  
Port Townsend Business Pages .... 28

**ADVENTURE AWAITS**

36

Hidden Hikes ..... 36  
Sailing Away ..... 50  
Worthington Park ..... 54  
More to Explore ..... 62

**ART & HISTORY**

43

Gallery Tour ..... 43  
Maritime History ..... 47  
A Glimpse Of Our Past..... 52

**EVENTS**

64

*All photos by the Port Townsend Leader unless otherwise specified.*

# COVER ARTIST

**Mike Biskup** is a contemporary watercolor painter living and working on Washington's Majestic Olympic Peninsula. His colorful, upbeat paintings consistently bring smiles to faces and can be found in collections worldwide.

A longtime staple of the Port Townsend Arts scene, Biskup has also shown paintings at art fairs, galleries and museums in Washington State, Los Angeles and New York. Born in 1970 in Los Angeles, he spent his youngest years voraciously drawing quirky characters, complex contraptions and way out worlds with his two older brothers. Decades later while earning a degree in Fine Art at UC Santa Cruz, Biskup swam in a richly blended stream of artistic freedom, Zen Buddhism and Native American spiritual consciousness.

After school, Biskup spent two decades homeschooling three intrepid children in the wilds of Port Townsend. Nest emptied, he embraced his role as a bringer of visions in the Artist/Shaman tradition elucidated profoundly by Joseph Campbell. At age 50, a powerful mystical experience shed new light on Everything...

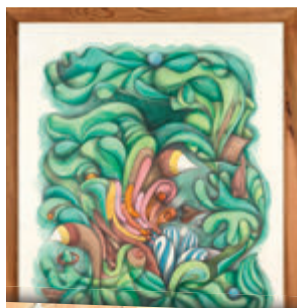
In 2021, Biskup and his wife Laura acquired five acres in Gardiner, Washington. The land, called The Green

Way, is located one mile from 101 and one mile from The Salish Sea between Port Townsend and Sequim. It's a breathtaking mix of tall trees, sunny clearings, gardens and natural meadows. The 44-by-60-foot Great Hall houses his painting studio and art gallery. Visitors are welcomed every 1st and 3rd Sunday to see works in progress, painting demonstrations, and rotating exhibitions of paintings for sale. The studio also serves as the home base for The Green Way Sunshine Sunday Social Club.

Biskup also sells a selection of original paintings, prints, and cards Saturday mornings at The Port Townsend Farmer's Market, April through December.

"In my paintings, Everything flows together," says Biskup. "Diverse colors, lines and shapes - People, places, plants and things are woven into one harmoniously functional ecosystem. I want to subtly remind viewers that we humans, in all our diversity, are essentially interconnected, and with thoughtfulness, can function together harmoniously as well."

Visit Biskup's website anytime to contact him, learn more about his work, sign up for The Sunshine Sunday Social Club, schedule a studio visit, or purchase paintings via his online shop at [mikebiskup.com](http://mikebiskup.com)



## The Green Way Sunshine Sunday Social Club

Art • Music • Dance • Improv • Fun!

Mike Biskup's Art Studio and Gallery

1st and 3rd Sundays • 3pm - 8pm

Live Music by *The Gilders of The Green Way*

Caveman Casual's Comedy Club, DJ David,

Father Michael's Fireside Philosophy



Location: **The Green Way**  
Arts Studio, Gathering Place, Sanctuary

One mile off HWY 101  
Between Port Townsend and Sequim  
More info at [www.mikebiskup.com](http://www.mikebiskup.com)



# WELCOME TO OUR WONDERLAND

It's like no other place, this landscape of rainforests, seashores, and chilly Pacific waters bobbing the hulls of historic wooden boats.

Here you'll find a range of friendly faces, from local students studying at the nationally recognized Northwest School of Wooden Boat Building, to award winning poets highlighted by Copper Canyon, a local press, and young families biking iconic paths like the Olympic Discovery Trail. There is a certain Peninsula flair you're sure to feel as you flip through these pages.

And speaking of pages, as a community sounding board for more than 134 years, The Port Townsend and Jefferson County Leader newspaper delights in making this annual Getaway Guide available to you. We're proud to champion the people and products that make our home such a delightful place to explore. Find unique lodging at a restored Victorian mansion, or camp under the stars at a local park. As you'll see from our featured vendors, the Olympic Peninsula terroir all but bursts from local seafood, wine, hard cider, and the scads of fresh fruits and

vegetables the nutrient-rich soil of the area produces.

Rested and nourished, getting outside is easy: The hardest part might be deciding what to do first. Swim, paddle board, charter a sail, hike your heart out, wander sea marshes and take the dog for a run at the local fairgrounds.

Check out our events pages, support our local businesses, and soak up the magic of Jefferson County and the greater Olympic Peninsula. We have the feeling you'll probably return, both to this guide, and the place it reflects.

On behalf of the Leader crew,

*Laura Jean Schneider*

associate publisher

Port Townsend and Jefferson County Leader



**COFFEE, SUSHI, BEER, WINE, SPIRITS, ORGANIC PRODUCE, GIFTS, INTERNATIONAL GOODIES, FUN**



**SINCE 1895 Uptown PORT TOWNSEND**

**ALDRICH'S**

**940 Lawrence St, Port Townsend • (360) 385-0500**

# SUMMER AT CENTRUM

9 FESTIVALS | 34 EVENTS | 350 ARTISTS

ONE EXTRAORDINARY PLACE | FORT WORDEN STATE PARK

**MAY  
THROUGH  
SEPTEMBER**

**50TH ANNIVERSARY  
BENEFIT CONCERT  
WITH DIANA KRALL**

**CHAMBER MUSIC**

**VOICE WORKS**

**FIDDLE TUNES**

**WRITERS CONFERENCE**

**JAZZ PORT TOWNSEND**

**ACOUSTIC BLUES**

**RED HOT STRINGS**

**TALES TEXTS  
& THEATER**

**WATER WORLD**

**VOICES FROM THE  
FIELD ARTS ACADEMY**

**DANCE THIS!**

**FREE FRIDAYS  
AT THE FORT**

**TICKETS ONLINE AT  
CENTRUM.ORG  
OR CALL (800) 746-1982**

*As always, tickets for youth under 18  
are free with advance reservation!*

## FEATURED ARTISTS

**CHAMBER MUSIC** Lucinda Carver, American Quartet **VOICE WORKS** Pharis Romero, Moira Smiley, Bridge Hill Kennedy, Grace Love, Johnny Nicholas, Karin Plato, Caleb Klauder, Reeb Willms, Nikki Dee, Mara Kaye, Yoseff Tucker **FIDDLE TUNES** Joel Savoy, Liette Remon, George Wilson, Katie Shore, Phil and Russ Tanner, The Foghorn Stringband, Geoff Seitz and Jim Nelson, Alasdair White, Tatiana Hargreaves, Allison de Groot, Cláudio Rabeca Band **WRITERS CONFERENCE** Gary Copeland Lilley, Kim Addonizio, Quenton Baker, EJ Colen, Alice Derry, Melissa Febos, CMarie Fuhrman, Tess Gallagher, Derrick Harriell, Arna Bontemps Hemenway, Ravi Howard, Jourdan Imani Keith, Sasha LaPointe, Sam Ligon, Sebastian Matthews, Rena Priest **JAZZ PORT TOWNSEND** John Clayton, George Cables, Obed Calvaire, Dawn Clement, Chuck Easton, Tia Fuller, Michael Glynn, Wycliffe Gordon, Jeff Hamilton, René Marie, Marlon Martinez, Lewis Nash, Miles Okazaki, Randy Porter, David Sanchez, Terell Stafford, Matt Wilson **ACOUSTIC BLUES** Jontavious Willis, Bobby Rush, Andrew Alli, Benjamin Hunter, Chaz Leary, Corey Ledet, Hubby Jenkins, Ian Walters, Jayy Hopp, Jerron Paxton, Big Jon Atkinson, Justin Golden, Lloyd Buchanan, Mark Puryear, Mary Flower, Nick Pence, Pamela English, Phil Wiggins, Rev. Robert Jones, Rodrigo Mantovani **RED HOT STRINGS** Matt Munisteri, Dave Biller, Don Stiernberg, Eva Scow, Jeremy Wakefield, Jonathan Stout, Katie Shore, Mikiya Matsuda, Tyler Jackson

**50TH  
ANNIVERSARY  
BENEFIT CONCERT**

An evening with Centrum  
alumna Diana Krall

Monday, July 10, 5 p.m.  
The McCurdy Pavilion

photo: Diana Krall

# PLAN AHEAD FOR A SMOOTH TRIP

## IT'S FINALLY TIME, AND YOU'RE READY TO MAKE YOUR GETAWAY. BUT IS YOUR GETAWAY READY FOR YOU?

**T**ravelers heading to the Olympic Peninsula should make plans to plan ahead. It's a sure way of making the old phrase "Getting there is half the fun" live up to its promise.

Advance planning is especially important for the Summer of 2023, and not a bad idea for 2024, as well.

Washington State Ferries is still struggling to come out of its coronavirus coma — beset by canceled sailings, reduced capacity, and crew shortages due to the pandemic and other factors — and the Port Townsend-Coupeville route is still awaiting the restoration of two-boat service between the Olympic Peninsula and Whidbey Island.

For travelers heading in either direction, that means making a reservation for a sailing a smart move.

Reservations can easily be made well in advance online, and travelers aren't charged the full amount of passage until they arrive at the toll booth in Port Townsend or Coupeville.

Travelers can also sign up online at [wsdot.wa.gov/ferries](http://wsdot.wa.gov/ferries) to get alerts when ferry sailings may be canceled due to the weather and tidal conditions.

Making a reservation is also crucial for high-travel times during the busy summer months.

Reservations are also advised for the San Juan Island ferries, or international service out of Anacortes. Call-center hours are 5 a.m.-8:15 p.m., seven days a week at 888-808-7977, or go online to [wsdot.wa.gov/ferries](http://wsdot.wa.gov/ferries).

For the other ferry routes, expect heavier traffic (and a possible wait) when heading westbound on a Friday and eastbound on a Sunday.

Those headed for the Hood Canal Bridge should also be aware that critical renovation work is slated for the span on selected dates this summer, which will mean a complete closure of the bridge at times.

Check [Hoodcanalbridge.com](http://Hoodcanalbridge.com) for information on planned closures.

The bridge also opens frequently for marine traffic.

The 6,521-foot span closes to vehicles when it opens for sailboats, and (without warning) for Navy vessels from the nuclear submarine base on Hood Canal.

For those traveling on US Highway 101, be sure to check for construction alerts on [wsdot.wa.gov](http://wsdot.wa.gov).

Summertime is prime construction season for state highways as well as US 101, and a large number of projects have been planned for local roadways over the next three years, from Hood Canal Bridge, to Port Townsend, and along US 101.

Bicycle travel on the Peninsula has a good mix of low-traffic, two-lane roads and features such as the Larry Scott Trail in Jefferson County and the Olympic Discovery Trail in Clallam County. The trails do not connect — yet — but plans are in the works. For those biking to Port Townsend from a ferry terminal at Kingston or Bainbridge Island, law enforcement suggests crossing the Hood Canal Bridge on Highway 104, and turning north to Port Townsend using Center Road.

Motorcycle groups and car clubs often pick the Olympic Peninsula as a destination. Again, Center Road is a smooth connection between the scenic drive along Hood Canal, the agritourism options in Chimacum and the Victorian architecture to be seen in PT. But don't be surprised if you come to PT on a summer Saturday and decide to spend the night — and find there are no rooms at the inn.

It is possible to plan an Olympic Peninsula visit without your own motorized transportation. If you carry what you need on your back or on a bicycle, a combination of public transport and ferries can get you almost everywhere you want to go.

# A Fun Filled Fiber Weekend!

## Sept. 29-Oct 1, 2023

Vern Burton Community Center  
Port Angeles, Washington

**FREE ADMISSION!**

Craft Marketplace and Workshops with  
Demonstrations and Hands-on Activities!

Workshops: Friday, Saturday & Sunday    Marketplace: Saturday & Sunday



Scan code for  
more information.



[www.pnwfiberx.com](http://www.pnwfiberx.com)

**eaglemount**  
WINERY | CIDERY

artisan wine, hard cider & fruit mead



1893 S Jacob Miller Road, Port Townsend, WA 98368  
[www.eaglemountwinery.com](http://www.eaglemountwinery.com) | (360) 385-1882

*Perfect in any  
Season*

Four free weeks of  
Jefferson County's  
No.1 news source  
with code  
GETAWAY23





# Whale Watching

Port Townsend & San Juan Islands

## Half Day, Full Day & Multi-Day Tours

See wild orcas, humpback whales, minke and gray whales on our family-run boats. Half day and full day cruises from Port Townsend, and half day cruises from Port Angeles. We guarantee you'll see whales or your next trip is free!



**38th**  
anniversary family  
business  
-★-



### PORT TOWNSEND HALF DAY TOURS

April 28 - October 1 • 10am departure  
June 30 - September 4 • 2:30pm departure  
October 2 - October 29 • 12pm departure

### PORT TOWNSEND SAN JUAN ISLAND ALL DAY TOUR

April 28 - September 24 • 9am daily departures

### 3-DAY SAN JUAN ISLAND WILDLIFE TOURS

July 11 - 13, 2023 • Evenings in Friday Harbor  
October 2 - 4, 2023 • Evenings in Roche Harbor



## RESERVE ONLINE

[PugetSoundExpress.com](http://PugetSoundExpress.com) or call 360-385-5288

Port Townsend • Point Hudson Marina, 227 Jackson Street  
Port Angeles • Port Angeles Wharf, 115 E Railroad Avenue



# JEFFERSON COUNTY ACCOMMODATIONS

# of Units	Internet	Meeting Facilities	Children Welcome	Pet Friendly*	Handicap Access	Pool/Hot or Jetted Tub
------------	----------	--------------------	------------------	---------------	-----------------	------------------------

## Hotels and Motels

Eaglemount Rockery Cottages/Motel	1822 SR 20	Port Townsend	98368	360-379-8922	www.eaglemountrockerycottageshotel.com
Mount Walker Inn	61 Maple Grove Rd	Quilcene	98376	800-544-0300	www.vacasa.com
Old Alcohol Plant	310 Hadlock Bay Rd.	Port Hadlock	98339	360-390-4017	www.oldalcoholplant.com
The Resort at Port Ludlow	One Heron Rd	Port Ludlow	98365	360-437-7000	www.portludlowresort.com

4	x		R			Outdoor Museum
12	x			fee	x	Heart of Port Hadlock
27	x	x	x	R	x	Peaceful Escape
37	x	x	x	fee	x	Beach Access

## Vacation Rentals

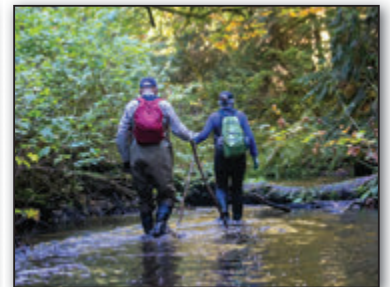
An Inn Between	5825 Old Gardiner Rd	Port Townsend	98368	360-379-8125	
The Wolves' Den at Winterchill	269 N Jacob Miller Rd	Port Townsend	98368	360-531-4508	www.winterchill-farm.com
Bay Cottage	4346 S. Discovery Rd	Port Townsend	98368	360-385-2035	www.baycottagegetaway.com
Cabin on the Canal	Near Pleasant Harbor	Brinnon	98320	206-782-3868	www.cabinonthecanal.com
Cabins at Treefrog Woods	1280 Cape George Rd	Port Townsend	98368	360-379-0906	www.penisulasportsman.com
Chevy Chase Beach Cabins	3710 S Discovery Rd	Port Townsend	98368	360-385-1270	www.chevychasebeachcabins.com
Cove RV Park	303075 Highway 101	Brinnon	98320	360-796-4723	www.coverv.com
Dabob Bay Cottage	840 Piper Rd	Quilcene	98376	360-765-3947	www.dabobbaycottage.com
Elk Meadows	3485 Dosewallips Rd	Brinnon	98320	360-796-4886	www.elkmeadowsbrinnon.wordpress.com
Fairmount Beach House	1071 Fairmount Rd	Port Townsend	98368	360-385-2480	Facebook.com/FairmountBeachHouse
Fort Flagler State Park	10541 Flagler Rd	Nordland	98358	360-385-3701	www.parks.wa.gov
Pleasant Harbor Marina House	308913 US Hwy 101	Brinnon	98320	360-796-4611	www.pleasantharbormarina.com
Windermere Vacation Rentals	294963 US Hwy 101	Quilcene	98376	360-796-3450	www.vacationhomesonhoodcanal.com
Worthington Mansion	101 E. Columbia St	Quilcene	98376	877-818-1013	www.evolve.com
Zen River Retreat	423 Lords Lake Loop	Quilcene	98376	360-316-9656	www.zenriverretreat.com
Fairmount Beach House	1071 Fairmount Rd	Port Townsend	98368	360-385-2480	Facebook.com/FairmountBeachHouse
Fort Flagler State Park	10541 Flagler Rd	Nordland	98358	360-385-3701	www.parks.state.wa.us
Guest Nest	389A Arcadia West	Port Townsend	98368	442-777-3195	www.vrbo.com/268004
Owls Nest Guest House		Quilcene	98376	425-941-8641	www.AirBnB.com/rooms/19573421
Pleasant Harbor Marina House	308913 US Hwy 101	Brinnon	98320	360-796-4611	www.pleasantharbormarina.com
Windermere Vacation Rentals		Brinnon	98320	888-796-3450	www.vacationhomesonhoodcanal.com
Worthington Park	151 Columbia Street	Quilcene	98376	866-210-8437	worthingtonparkquilcene.org
Zen River Retreat	423 Lords Lake Loop	Quilcene	98376	360-316-9656	www.zenriverretreat.org

1	x		x	R		x	Private beach
1	x		x	R			Quiet, water view
3	x		x				Water views & sunsets
1			x	x			Waterfront
2			x				1909 Inn at the winery
7	x	x	x	x		x	Luxury cabin retreat
1	x		x	x			Beautiful beach access
1	x		x				Private Beach Resort
1			R				Access to Hood Canal
1	x		x				Private cabins
116			x				Private beach
1	x	x	x				Olympic Mountain view
7	R		x	x	x		2 nights minimum
1	R		x	x	x		Private beach, boating access
3	x					x	Mt view—river front
1		x		x			Private beach
5				x			Now reserve on line
1		x		x			Resort Living
1							Private, cozy, views
1		x	x	x			Marina view, quiet
10		R		x	x	x	Hood Canal waterfront
4		x	x	x		x	Sleep in a museum!
2		x		x	R		Restorative Guest Retreat

## West Jefferson County

Hoh Valley Cabins	5843 Upper Hoh Rd	Forks	98331	360-640-2074	www.hohvalleycabins.com
Kalaloch Lodge	157151 Hwy 101	Forks	98331	360-962-2271	www.thekalalochlodge.com
Rainforest Hostel	169312 Hwy 101	Forks	98331	360-374-2270	www.rainforesthostel.com

4			x				Rainforest Retreat
58			x	x	x		Ocean Experience
2	x		x	R			See our website for rates





# JEFFERSON COUNTY ACCOMMODATIONS

## Public Campgrounds

Location	Address	County	Phone	Website
County Fairgrounds	4907 Landes St	Port Townsend	98368 360-385-1013	www.jeffcofairgrounds.com
Collins Campground	Hwy 101, 6 mi. from 101	Brinnon	98320 360-765-2200	www.fs.usda.gov/olympic
Dosewallips State Park	Hwy 101, 1/4 mi. S of	Brinnon	98320 888-226-7688	www.parks.wa.gov
Fort Flagler State Park	10541 Flagler Rd	Nordland	98358 360-385-1259	www.parks.wa.gov
Fort Townsend State Park	1370 Old Fort Townsend Rd	Port Townsend	98368 360-385-3595	www.parks.wa.gov
Fort Worden State Park	200 Battery Way	Port Townsend	98368 360-344-4412	www.parks.wa.gov
Lake Leland County Park	165 Leland Valley Rd.	Quilcene	98736 360-385-9160	www.countyrec.com
Oak Bay Lower County Camp.	301 Portage Way	Port Hadlock	98339 360-385-9160	www.countyrec.com
Oak Bay Upper County Camp.	290 Cleveland St	Port Hadlock	98339 360-385-9160	www.countyrec.com
Quilcene County Campground	294964 Hwy 101	Quilcene	98376 360-385-9160	www.countyrec.com
Seal Rock Campground	1 mile N of Brinnon	Brinnon	98320 360-765-2200	www.fs.usda.gov/olympic
Quilcene County Campground	294964 Hwy 101	Quilcene	98376 360-385-9160	www.countyrec.com
Seal Rock Campground	1 mile N of Brinnon	Brinnon	98320 360-765-2200	www.fs.usda.gov/olympic

## Private Campgrounds

Location	Address	County	Phone	Website
Cove RV Park	303075 Hwy 101	Brinnon	98320 360-796-4723	www.coverv.com
Hard Rain Café & RV Park	5763 Upper Hoh Rd.	Forks	98331 360-374-9288	www.hardraincafe.com
Halfway RV Park	Hwy 101 & Brinnon Ln	Brinnon	98320 360-796-4715	
Port Ludlow RV Park	44 Breaker Ln	Port Ludlow	98365 360-437-9377	Facebook.com/portludlowrv
Smitty's RV Park	9142 Flagler Rd	Nordland	98358 360-602-2114	smittysrvpark.com

<sup>1</sup>PARK CODE: (P)ivate (F)ederal (FA)irgrounds (S)tate (C)ounty (Po)rt

<sup>2</sup>PET CODE: (R)estricted | <sup>3</sup>SHORE CODE: (F)resh (S)alt

Park <sup>1</sup>	# of sites	Hook-ups	Pull-through	Dump Station	Toilets	Showers	Handicap Access	Pets <sup>2</sup>	Swim	Shore <sup>3</sup>	Boating	Trails
FA	80	x	x	x	x	x		x				County Fairgrounds
S	16		x		x		x		x	F	x	x
S	140	x	x	x	x	x	x	x	x	F	x	x
S	116	x	x	x	x			R		S	x	x
S	40	x	x	x	x	x		R		S	x	x
S	80	x	x	x	x	x		R		S	x	x
C	22		x		x	x	x		x	S	x	x
C	6	x			x	x	x			S	x	
C	24	x	x		x	x	x			S	x	
C	24	x			x	x				F	x	
F	41		x		x			R		S		
C	24	x								F	x	
F	41		x		x			R		S		
P	25	x			x	x		x		S	x	
P	13	x	x		x	x	x	x				x
P	22	x	x		x	x		x				
P	32	x	x	x	x	x	x	x				x
P	32	x	x					x		S	x	

quiet, on river beach & trails  
Open year round  
Open year round  
Open year round  
Open 4/1 - 10/31  
Open 4/1 - 10/31  
Open 4/1 - 10/31  
Wooded Campsites  
beach & trails  
Wooded  
Beach & trails

country store  
Rain Forest groups welcome  
in the woods  
Quiet country setting

## Public Parks

Location	Address	County	Phone	Website
Anderson Lake State Park	Anderson Lake Rd	Chimacum	98325 360-385-1259	www.parks.wa.gov
East Beach County Park	Marrowstone Island	Nordland	98358 360-385-9160	www.countyrec.com
Gibbs Lake County Park	West Valley Road	Chimacum	98325 360-385-9160	www.countyrec.com
Hicks County Park	Shine	Port Ludlow	98365 360-385-9160	www.countyrec.com
H.J. Carroll County Park	Rhody Dr.	Chimacum	98325 360-385-9160	www.countyrec.com
Home Lake	Above Dosewallips River	Brinnon	98320	www.fs.usda.gov/olympic
Indian Island County Park	Fort Flagler Rd	Marrowstone	98358 360-385-9160	www.countyrec.com
Irondale Beach County Park	End of Moore St.	Irondale	98339 360-385-9160	www.countyrec.com
Lake Leland County Park	Hwy 101	Quilcene	98376 360-385-9160	www.countyrec.com
Larry Scott Memorial Trail	6 mile multi purpose trail	Port Townsend	98368 360-385-9160	www.countyrec.com
Ludlow Falls	Paradise Bay Rd	Port Ludlow	98365	www.portludlowrvpark.com
Mt. Walker View Point	4 miles off Hwy 101	Quilcene	98376 360-765-2200	www.fs.usda.gov/olympic
Mystery Bay Recreation Area	Fort Flagler Rd	Nordland	98358 360-385-1259	www.parks.wa.gov
Shine Tidelands State Park	W end Hood Canal Bridge	Port Ludlow	98365	www.parks.wa.gov

Park <sup>1</sup>	Shore <sup>3</sup>	Boating	Trails
S	F	x	x
C	S	x	
C	F	x	x
C	S	x	
C	F		x
F	F		x
C	S		x
C	S	x	x
C	F	x	
C	S		x
P	F		x
F			x
S	S	x	
S	S		



# GET ON THE WATER

this Summer at Northwest Maritime Center



## HANDS-ON SHIP SIMULATOR TOURS

July 1 – September 2

Pilot a ship into Seattle Harbor or experience what it's like to drive into a storm as you don the role of captain in our state-of-the-art Ship Simulator!

Free and first come first serve!

Please call ahead, stop by the Chandlery located at 431 Water St., Port Townsend., see details and specific times at [nwmaritime.org/summer-tours/](http://nwmaritime.org/summer-tours/)

## PRIVATE GROUP SAILING LESSONS

May 25 - September 3

**\$575 | Up to 6 People | All Ages Welcome**

Experience the magic of Port Townsend Bay aboard our stunning 40' wooden sailboat, *La Vie en Rose*. These 2.5-hour lessons are perfect for families, friends, groups, or couples who would like to try sailing without committing to a multi-day class.

Learn more and register at [nwmaritime.org/private-group-sailing](http://nwmaritime.org/private-group-sailing)



## PORT TOWNSEND BAY TOURS

June 30 - September 3

**Adult \$22, Youth \$15, Under 5 are Free!**

Explore Port Townsend from the water as you cruise to points of interest around Port Townsend Bay aboard our comfortable 40' catamaran, *Admiral Jack*. Learn more and get tickets at [nwmaritime.org/summer-tours/](http://nwmaritime.org/summer-tours/)



431 Water St, Port Townsend, WA | 360.385.3628



# LODGING ON THE GO

**T**he Olympic National Park is a nature lover’s paradise. With its vast forests, rugged coastline, and snow-capped peaks, the park offers a diverse range of ecosystems and outdoor activities.

For those looking to spend a few nights under the stars, here are five great campsites in and near the Olympic Forest and Olympic National Park.

## HOH RAIN FOREST CAMPGROUND

For those looking to explore one of the most unique and awe-inspiring ecosystems in the world, the Hoh Rain Forest Campground is the perfect place to stay. The Hoh Rain Forest is known for its dense canopy of moss-covered trees, ferns, and other plants, as well as its abundant wildlife. The campground is located near several trailheads that offer access to some of the best hiking in the park, including the Hall of Mosses Trail and the Hoh River Trail. [nps.gov/olymp/planyourvisit/visiting-the-hoh.htm](https://nps.gov/olymp/planyourvisit/visiting-the-hoh.htm)

## SOL DUC HOT SPRINGS CAMPGROUND

Located in the heart of the Olympic Forest, the Sol Duc Hot Springs Campground offers a unique camping experience. In addition to traditional campsites, the campground also features several natural hot springs pools that are open to campers. After a long day of hiking or exploring the surrounding forest, there’s nothing quite like soaking in a hot spring surrounded by towering trees and fresh mountain air. [nps.gov/olymp/planyourvisit/camping.htm](https://nps.gov/olymp/planyourvisit/camping.htm).

— Continued on page 13

Pick Up Some Fun



**ANIME KAT**

Manga & Graphic Novels  
Board Games  
Card Games  
Video Games  
and More

114 W 1st St, Port Angeles  
[www.AnimeKat.com](http://www.AnimeKat.com)



**Bonita's**  
Four-legged Friends  
*pet supplies*

10159 Old Olympia Hwy  
Sequim, WA 98382  
(360) 477-4388

1433 W Sims Way  
Port Townsend, WA 98368  
(360) 379-0436

[bonitaspetsupplies.com](http://bonitaspetsupplies.com)

*Fine dining for your family pet*



### **KALALOCH CAMPGROUND**

If you're looking for a campsite with a view, the Kalaloch Campground is hard to beat. Located on a bluff overlooking the Pacific Ocean, this campground offers stunning views of the coastline and easy access to several beaches. In addition to camping, the Kalaloch area is also popular for beachcombing, whale watching, and storm watching during the winter months. [nps.gov/olymp/planyourvisit/kalaloch-area-brochure.htm](https://nps.gov/olymp/planyourvisit/kalaloch-area-brochure.htm)

### **DEER PARK CAMPGROUND**

For those looking to get away from the crowds and enjoy some solitude in the mountains, the Deer Park Campground is a great option. Located high in the Olympic Mountains, this campground offers stunning views of the surrounding peaks and valleys. The campground is only accessible via a narrow, winding road, so be sure to bring a vehicle that can handle steep grades and tight turns. [nps.gov/olymp/planyourvisit/deer-park-area-brochure.htm](https://nps.gov/olymp/planyourvisit/deer-park-area-brochure.htm)

### **LAKE LELAND CAMPGROUND**

Close to the Port Townsend with year-round fishing opportunities, Lake Leland is a locals' favorite. Be sure to bring a swimsuit and hiking boots. Lake Leland is also perfect for paddle sports. [jeffersoncountywa.myrec.com/documents/final\\_map\\_of\\_leland\\_campground\\_layout.pdf](https://jeffersoncountywa.myrec.com/documents/final_map_of_leland_campground_layout.pdf)

Overall, the Olympic Forest and Olympic National Park offer a wealth of camping opportunities for those looking to escape the hustle and bustle of city life and reconnect with nature.

Whether you're looking for a rustic campsite deep in the woods or a campground with all the amenities, the park has something for everyone. So pack your tent and sleeping bag, hit the road, and prepare to experience the beauty and tranquility of the Olympic Peninsula.



Fresh, creative seafood,  
pasta and steak dishes.

Gourmet Northwest  
cuisine with international flair.

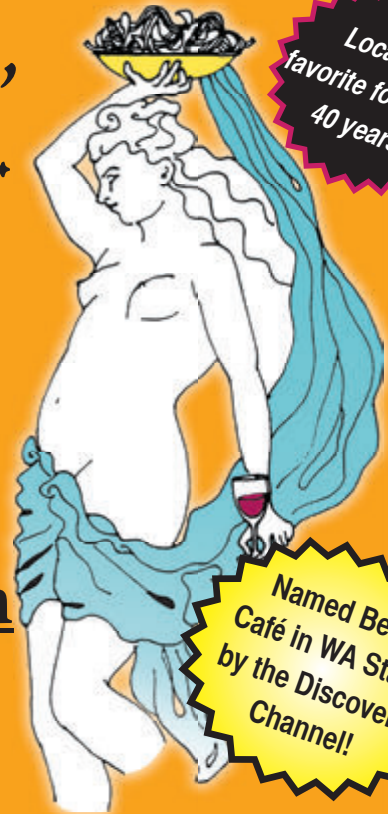
# FOUNTAIN CAFÉ

[www.nwfountaincafe.com](http://www.nwfountaincafe.com)

920 Washington Street, Downtown Port Townsend

*just up from the Haller Fountain*

**360-385-1364** Nickolas Yates, Sole Proprietor



Locals'  
favorite for over  
40 years

Named Best  
Café in WA State  
by the Discovery  
Channel!

.....  
*Voted  
Best Italian Restaurant  
& Most Romantic Restaurant  
on the Olympic Peninsula*  
.....

## *Nicko's Grotto*

*Fine Italian Cuisine*  
.....

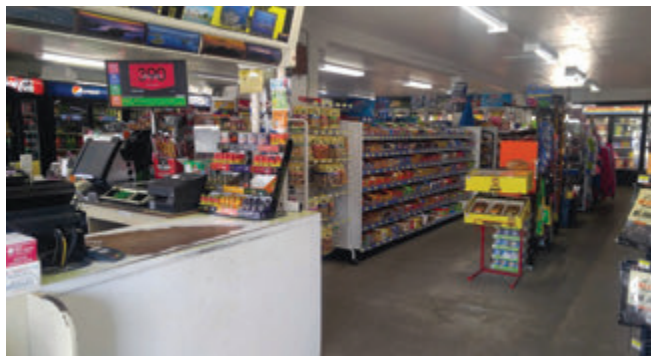
**Open Tuesday - Saturday 4pm to 9pm  
Call for Reservations**

232 Taylor St, Port Townsend  
[nickosgrotto.com](http://nickosgrotto.com)  
(360) 344-8200  
.....

# BEST GRAB-N-GO SPOTS IN JEFFERSON COUNTY



*Getables offers a wide selection of wine and beer. Photo courtesy of Getables*



*The Brinnon General Store is right near Dosewallips State Park.*

For visitors short on time or residents in a rush, a nice spot for grabbing quick grub or other goods can be invaluable. Whether one is seeking a scrumptious snack, a quick refreshment, or a last-minute gift, these Jefferson County businesses have you covered.

## 1. GETABLES

Downtown Port Townsend's perfect pitstop for just about anything has to be Getables.

Need a quick snack and fizzy drink? Getables has you covered. Need a cool postcard to send to loved ones while in town? Getables has your back. The small shop is smack-dab in the middle of downtown and offers a wide range of goods from local gifts to snacks and wine and beer to bring on a beachside picnic. You can even get a cup of coffee, tea, or hot chocolate to warm up or cool down. The business is located at 810 Water St. For more information, go to [ptgetables.com](http://ptgetables.com).

## 2. BRINNON GENERAL STORE

For those in south county, the Brinnon General Store has plenty to offer. With two gas pumps up front, the business makes for a great break spot for road-trippers, but also has plenty of goodies to-go.

Beyond just snacks and beer, the general store offers a selection of groceries like eggs, fruit, milk, and other items. Whether it's a quick stop on the way to Dosewallips State Park or a last-minute grocery run, the Brinnon



## TASTE the SEASON

### PORT TOWNSEND FARMERS MARKET

Open Saturdays  
9am–2pm, 650 Tyler St

### CHIMACUM FARMERS MARKET

Open Sundays  
10am–2pm, Chimacum Corner

80+ VENDORS · FRESH SEASONAL PRODUCE  
EGGS · FISH · ARTISAN FOOD · ART & CRAFTS



Dollar-for-dollar  
SNAP Match up to  
\$25



[jefmarkets.org](http://jefmarkets.org)



General Store's got the goods. The shop is on US Highway 101, just north of Dosewallips State Park.

To learn more, visit [facebook.com/pages/Brinnon%20General%20Store/147858178569524](https://facebook.com/pages/Brinnon%20General%20Store/147858178569524).

### 3. CHIMACUM CORNER FARMSTAND

Lovingly known as “the Corner” by locals, the Chimacum Corner Farmstand is a great stop-and-shop for local produce and goods harvested and sold on the Peninsula.

The shop has it all, whether it's local meats, organic produce, baked goods, fresh food from the corner kitchen, or plants from the nursery. Starting in a former auto parts store amidst an economic recession in 2010, the Chimacum Corner Farmstead has continued to expand and become the Tri Area's go-to spot, located at 9122 Rhody Drive. Offering curbside pickup to customers, the Corner can make quick errands that much faster.

For more information, go to [chimacumcorner.com](http://chimacumcorner.com).

### 4. QUILCENE VILLAGE STORE

This business is way more than just a gas station. For Quilcene locals in search of a freshly-made sandwich or tourists in town looking for last-minute camping equipment, the Quilcene Village Store has your back. Located on US Highway 101 just northwest of central Quilcene, the business offers plenty of product. Whether it's gas, food, liquor, housewares, tea, coffee, snacks, locally-baked goods, clothing, or picnic supplies, the Village Store makes for a great stop-n-shop for a variety of needs. While the cozy storefront may look small from the outside, the variety of items for sale is anything but miniscule.

To learn more about the Quilcene Village Store, visit [quilcenevillagestore.com](http://quilcenevillagestore.com).

### 5. ALDRICH'S MARKET

The ever-present Aldrich's Market has been a staple of Uptown Port Townsend since 1895. Feeding folks for more than a century, the business offers a mix of the eclectic with the ordinary.

While visitors can grab everyday grocery goods, Alrich's offers a unique collection of products from around the world, whether it's Belgian Looza juice or Locker Quadratini crackers from Italy. For those short on time and looking for lunch, the grocery store's deli offers panini sandwiches, hot soups, espresso and coffee, and Granita smoothies.

Aldrich's is located at 940 Lawrence St. For more information, go to [aldrichs.com](http://aldrichs.com).



*An aerial view of the Chimacum Corner Farmstand. Photo courtesy of Chimacum Corner Farmstand*



*The Quilcene Village Store offers a wide range of items from freshly-made sandwiches to camping supplies. Photo courtesy of Quilcene Village Store*



*The Aldrich's storefront in Uptown offers a mix of quality grocery goods and unique items from around the globe.*



# Drink & Dine Over the Water

Handcrafted Cocktails • Exceptional Food



SIRENS: 823 Water Street, Port Townsend 360.379.1100

*Hidden gem of a  
speakeasy*



THE IN BETWEEN

*Fine craft cocktails*



IN BETWEEN: 823 Water Street, Port Townsend 360.379.2425



**Northwest Cuisine with  
a little Classic Americana  
and a dash of English Pub.**

THE OLD WHISKEY MILL: 1038 Water Street, Port Townsend 360.385.4422

# CITIES & TOWNS

## THE COMMUNITIES OF JEFFERSON COUNTY



**BRIDGEHAVEN**

**T**he Bridgehaven community is located a few miles south of the west end of the Hood Canal Bridge and is operated by the Bridgehaven Community Club Association. The community has about 200 lots, most with homes on them.

Bridgehaven operates with an elected board of directors, a water board and an architectural committee. Bridgehaven has a water manager to maintain its Class A water system, which supplies Bridgehaven and communities just north and south of it.

Bridgehaven contains about 300 feet of waterfront property, with a large picnic pavilion, a boat launch and parking, as well as a 20-slip floating marina dock and a fish-cleaning station.

Bridgehaven is located about 25 miles south of Port Townsend and 9 miles south of Port Ludlow.

[bridgehaven.net](http://bridgehaven.net)

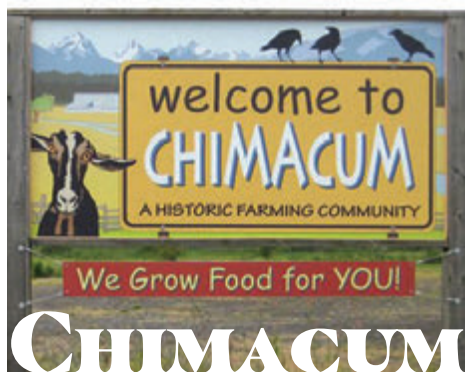
**A** census-designated place in South Jefferson County, Brinnon is home to about 800 residents as of the latest census. Known for being the oldest Boy Scout Camp west of the Mississippi, founded in 1919, Brinnon was named in 1860 after Elwell Brinnon, who took a donation land claim at the river's mouth.

Brinnon is located about 61 miles north of Olympia on the Olympic Peninsula's east side, along Hood Canal on the eastern edge of the Olympic National Forest.

Brinnon is about 38 miles south of Port Townsend and about 13 miles south of Quilcene. For a spectacular "aerial" view of the region, head a few miles north of Brinnon to the Mount Walker lookouts.



**BRINNON**

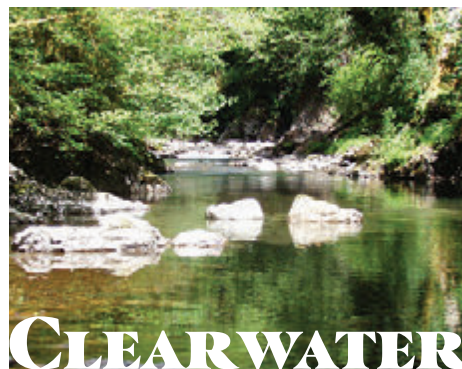


**T**he Chimacum Valley is named for the Chemakum tribe that once lived on the land. The unincorporated community on the Eastern Olympic Peninsula is known for its agriculture.

Chimacum is 10 miles south of Port Townsend and 8 miles northwest of Port Ludlow. Places to explore are Anderson Lake State Park, HJ Carroll Park, Tamanowas Rock Sanctuary, Gibbs Lake and Chimacum Woods. For more information, visit [jeffersoncountywa.com](http://jeffersoncountywa.com).

**C**learwater, located about 8 miles north of Queets, is named for the nearby Clearwater River and consists mostly of timberlands with limited private ownership.

The unincorporated community is on the west coast of Jefferson County, just outside the boundaries of the Quinault Indian Reservation. The influence of the Pacific Ocean gives Clearwater heavy year-round precipitation and an oceanic climate. Guests can use a Discover Pass to visit nearby Clearwater State Park. More at [stateparks.com](http://stateparks.com).



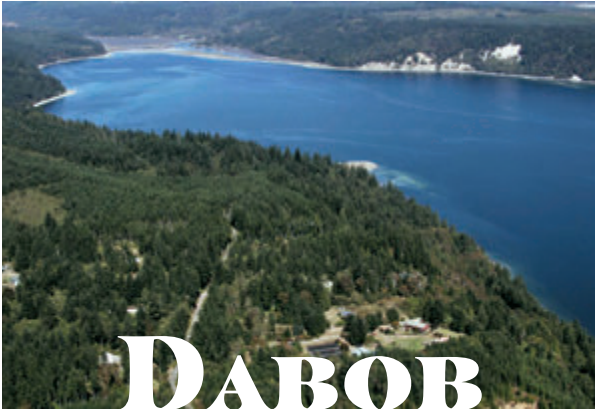
**N**amed after George Coyle, an early settler, Coyle is located about 16 miles south of Bridgehaven on the Toandos Peninsula in an unincorporated area.

The Toandos Peninsula is frequently called the Coyle Peninsula after the community of Coyle, located at its point. It is also known as the Dabob Peninsula, as it separates Dabob Bay from the rest of the Hood Canal.

Since 2009, the community has hosted Concerts in the Woods, a free-admission musical showcase. (See [coyleconcerts.com](http://coyleconcerts.com) for latest updates).

Coyle is also known for its clam and oyster harvest. The beach is mostly rocky, and digging is difficult but productive for native littleneck and butter clams in the mid-low tidal zone. There are also some horse clams and cockles. Geoducks can be found in the sand at extreme low tides (-2.0 or lower) below the rocky zone.

The waters off Toandos Peninsula State Park stay colder in the summer than most of Hood Canal, perfect for shellfish.



# DABOB

**D**abob Bay is one of the largest and most pristine salt marsh bay estuaries in Puget Sound. It is located on the east side of the Bolton Peninsula, which separates Quilcene and Dabob Bay.

On the north end of Hood Canal, Dabob Bay is home to numerous shellfish companies, and is known worldwide for the quality of its water, shellfish and diverse wildlife.

Dabob is located about 13 miles south of Discovery Bay, and about 23 miles south of Port Townsend.

Dabob is home to Dabob Bay Natural Area, established in 1984 to protect rare intact salt marsh and sand spit plant communities within one of Washington's highest-functioning coastal spit and tidal wetland systems. Initially created as a natural area preserve, the site was enlarged in 2009 to include additional land designated as Natural Area Preserves, along with lands designated as natural resources conservation areas. This provides additional opportunities for low-impact public use.



# DISCOVERY BAY

**L**ocated about 13 miles southwest of Port Townsend, Discovery Bay, aka "The Lavender Capital of North America," is a small bay that has clean water along forested slopes. Discovery Bay enters the Strait of Juan de Fuca between the Miller and Quimper peninsulas. Its mouth is just south of Protection Island and is between 6 to 7 miles in length. It is fed by Snow Creek, among other small watercourses. It is also the site of many habitat conservation projects that endeavor to restore native salmon and Olympia oyster species. Make a stop at Discovery Bay to walk along the Olympic Discovery Trail and take in the sparkling water views!



**G**ardiner is an unincorporated community, partially in neighboring Clallam County, and is about 6.5 miles north of Discovery Bay on the Miller Peninsula.

Farming, lumber and fishing still figure into Gardiner's economy, but the area is following the Jefferson County trend away from agriculture, as old homesteads and family farms are subdivided into residences.

During the last census, roughly 300 people lived in the area.

Although Gardiner is considered within Jefferson County, the area is served by Clallam County Fire District 3.



# INDIAN ISLAND

**I**ndian Island is an unincorporated community located between Port Townsend and Kilisut Harbor.

Until the construction of the Port Townsend Ship Canal, Indian Island was connected to the mainland by a broad sand flat and back-shore marsh.

It is occupied by the Indian Island Naval Reserve, and although the last census showed about 200 residents, there are no civilian residences on the island. The Naval Reserve is home to Naval Magazine Indian Island.

Indian Island also has a large trail system along the coast. The Indian Island trail is divided into three segments; Portage, Lagoon and Isthmus, with miles of shoreline that can be hiked on the beach, bluffs or a combination of the two. Leisurely beach ramblers and trail runners and have access to nature and the breathtaking scenery of Oak Bay.

**N**amed after early settler Laura Andrews, Leland is an unincorporated community within Jefferson County.

The area is known for Leland Lake, with a shallow and largely underdeveloped shoreline.

The lake is stocked in April and May with catchable-size rainbow trout. Good numbers of coastal cutthroat trout broodstock, weighing about 1 pound each, are stocked in March.

The lake also receives larger rainbows in the fall, providing good fishing even in winter months. There is good fishing for stocked rainbows during fall, winter and spring, with largemouth bass, bluegill sunfish and yellow perch from spring through the summer. Black crappie fishing can be productive during the cooler months of fall.



# LELAND

**D**iscovered by George Vancouver in 1792, and settled in the 1800s by Norwegian immigrants, Marrowstone Island

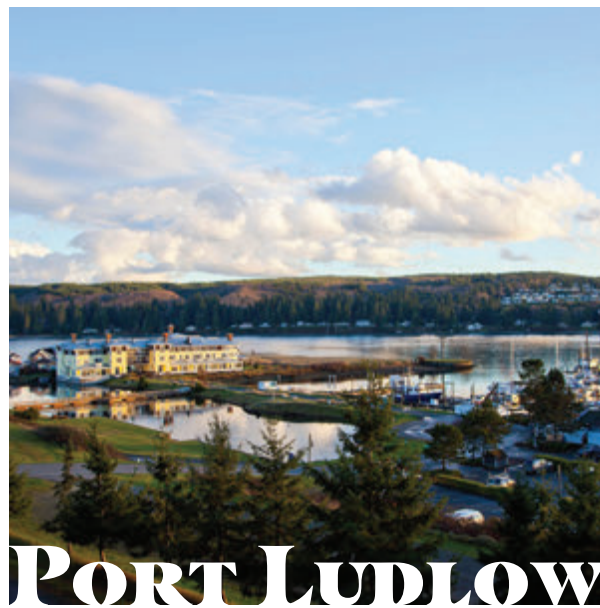
is still home to descendants of the original settlers.

As of the last census, Marrowstone Island, located east

of Indian Island, was home to about 950 people.

At the north end of the island is Fort Flagler State Park, a military base built in 1907 to protect the entrance to Puget Sound. Fort Flagler existed as a military base until the early 1950s, when it was decommissioned and turned into a state park. The Fort Flagler barracks and bunkers are preserved today and open to the public. There are hiking trails with views of Mount Rainier, Mount Baker and the San Juan Islands.

## MARROWSTONE ISLAND



## PORT LUDLOW

**I**n 1842, the town and bay were named in honor of Lieutenant Augustus C. Ludlow, by the Commander of the U.S. Exploring Expedition, Lt. Charles Wilkes.

The first shipments of timber from Puget Sound to San Francisco in 1851 stimulated interest in the business potential of sawmills on the sound. John R. Thorndike and W. P. Sayward sailed to Puget Sound in 1852 and found the environs of Port Ludlow promising. Thorndike filed a timber claim of 318 acres, and began building a mill there.

Following the completion of the nearby Hood Canal Bridge in 1960, Port Ludlow became the site of resorts and planned communities, attracting retirees, vacation home buyers or those needing a more convenient commute to the business centers on the west side of Puget Sound.

**S**amuel Hadlock landed in Washington in what is now known as Port Hadlock in 1870.

He contracted with the Washington Mill Company to build a sawmill on the spit of a low bank of land off the bay with deep enough water for tall ships to moor.

It was there that Hadlock established a large mill, shipping lumber to San Francisco and as far away as Australia and Hawai'i.

Construction started on the alcohol plant in 1909. It was completed in 1910 and began manufacturing wood alcohol from sawdust.

The residential section was in upper Hadlock. After the lumber

# PORT HADLOCK



mill burned, businesses began to move uptown.

William Sehrs, of Sehrs Shipyard, built the Masonic Temple in 1911 and the Nordland ferry and bridges across the

Chimacum Creek.

The Tri-Area, which includes Port Hadlock, Irondale and Chimacum, was a growing, viable township.

**T**he first iron-producing blast furnace in Washington was completed in Irondale in 1881. About 1,200 tons of pig iron was produced during its first year of operation with ore obtained from Chimacum Valley. The plant closed in 1889.

The initial hope was for Irondale to become a major iron and steel producer for the western United States. At first, it looked as though this dream might come true. After only two years of production, Irondale had several bars, boarding facilities for both men and horses, and homes and accommodations for more than 200 workers. Before the local economy and the plant failed in 1889, there were more than 400 men employed at the foundry. The town expanded and grew on the sandy bluffs that overlooked the waterside plant.

As of the most recent census, the population for Irondale and Port Hadlock combined is around 3,500.



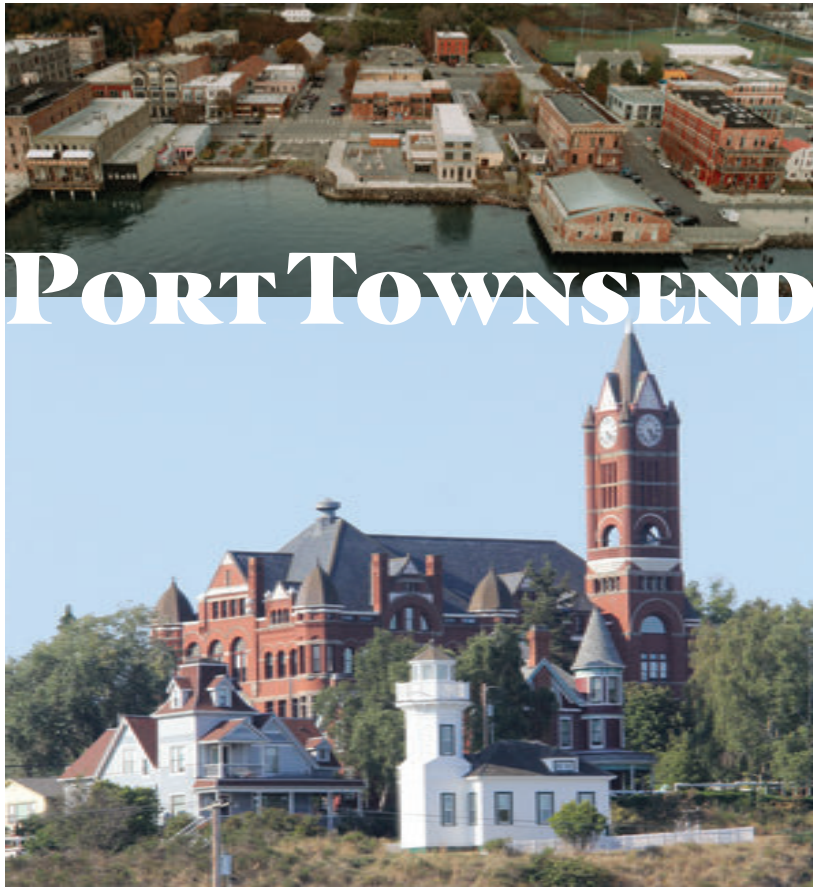
# IRONDALE

TERRITORY

24 GETAWAY | 2023 WASHINGTON.

TO ACCOMPANY





**P**ort Townsend is the only city in Jefferson County, with about 10,600 residents, it is also the county seat.

In addition to its natural scenery at the northeast tip of the Olympic Peninsula, the city is also known for the many Victorian buildings remaining from its late 19<sup>th</sup> century heyday, numerous annual cultural events and as a maritime center for independent boat-builders and related industries and crafts. The Port Townsend Historic District is a U.S. National Historic Landmark District.

Port Townsend is also called “The City of Dreams” because of the early speculation the city would be the largest harbor on the West Coast of the United States.

Fort Worden and Point Wilson Lighthouse should be on your list to visit.

Visit [enjoypt.com](http://enjoypt.com).

**Q**ueets is an unincorporated community that lies in both Grays Harbor and Jefferson counties. In the 2020 census, the population of Queets was 183. The primary residents are Native Americans of the Quinault Indian Nation.

Drive through Queets on U.S. Highway 101 to find Pacific beach hiking trails, access to Olympic National Park and the Olympic National Forest. The town consists of several homes, a store and a gas station, but also provides access to hiking trails such as the Queets River trail.

The 50-mile long Queets River runs almost its entire course through Olympic National Park. The last few miles run through Quinault Nation land until it reaches the Pacific Ocean. In the winter months, fly anglers from across the state head to Queets for its numerous and large native steelhead.



# QUILCENE



Quilcene is an unincorporated community and census-designated place in Jefferson County, whose population was 664 as of the 2020 census.

The community is located on the Olympic Peninsula at the head of Quilcene Bay, an arm of the seawater-filled glacial valley of the Hood Canal.

Early inhabitants of the area were the Twana people, inhabiting the length of the Hood Canal. The Quilcene (“salt-water people”) were a distinct band.

The Wilkes Expedition charted the place as “Kwil-sid” in 1841. Hampden Cottle, a logger from Maine, and several other families settled there in 1860 and eventually established a town. The town was originally situated on the banks of the Quilcene River before being moved to higher ground. The economy in Quilcene was based primarily on farming and logging, and by 1880 the town had a population of 53.



EST. 1897

## CHEVY CHASE BEACH CABINS

*Port Townsend, WA*

Chevy Chase Beach Cabins is an idyllic place for a gathering of family and friends, a romantic retreat or a solo excursion – a historic getaway on Discovery Bay in Port Townsend – hosting guests and their pups for over 125 years. Open year-round.

[www.chevychasebeachcabins.com](http://www.chevychasebeachcabins.com) | 360-385-1270



# PORT TOWNSEND




APPAREL, ACCESSORIES & DECOR  
NAUTICAL • PIRATE  
• STEAMPUNK •

1020 Water Street  
Port Townsend, WA 98368


360.379.6906

Joyce Janetski (owner)  
joyce@worldsendporttownsend.com  
WWW.WORLSENDPORTTOWNSEND.COM



5★ on  
tripadvisor.com

Sublime Comfort  
in Port Townsend

 **Ravenscroft Inn**  
PORT TOWNSEND B&B

www.ravenscroftinn.com  
855.290.8840 or 360.205.2147



Purveyors of Fine Spices, Herbs, Blends, Salts, Teas

## Find Your Way to Flavor!®

Explore 250 + Spices & Exclusive Hand-Mixed Blends  
Delicious Loose Leaf Teas • Salts • Sugars  
Unique Gifts • Easy Recipes • & More!

**THE SPICE & TEA EXCHANGE® OF PORT TOWNSEND**  
929 Water Street | Port Townsend, Washington 98368 | 360.385.1633 | porttownsend@spiceandtea.com

The Old Consulate Inn  
Bed and Breakfast



(360) 385-6753

313 Walker St.  
(at Washington)  
Port Townsend, WA  
98368

[www.OldConsulate.com](http://www.OldConsulate.com)

Voted  
Best  
Asian Food  
in the County!



Good • Clean • Fresh  
Mon-Sat: 11am-8:30pm

**1-2-3 thai food**  
30+ MENU OPTIONS  
AVAILABLE FOR TAKE-OUT ONLY  
2219 East Sims Way **360-344-3103**

Venture off the  
Beaten Path



Clothing, shoes, and accessories  
for the inspired women.

830 Water St. Port Townsend • [abouttimeclothing.com](http://abouttimeclothing.com)



BACK TO THE RETRO DINING  
EXPERIENCE

RIGHT ON WATER



The  
Swan  
Hotel 

A waterfront boutique  
hotel located in the heart  
of Port Townsend

222 Monroe St, Port Townsend  
360-385-1718  
[theswanhotel.com](http://theswanhotel.com)



A warm, golden-hour photograph of a field. In the foreground, there is a field of tall, golden-brown grasses. In the middle ground, a deer is running across the field, slightly out of focus. In the background, there are mountains with some snow on their peaks, also out of focus. The sky is a soft, hazy orange and yellow, suggesting sunset or sunrise. The overall mood is peaceful and serene.

**Write it on your heart  
that every day is the  
best day in the year.**

*– Ralph Waldo Emerson*

Voted best Chinese of the Olympic Peninsula



# FOUR SEASON'S Fine Chinese Cuisine

Dine in | Take out

(360) 385-5395

1111 Water St.  
Port Townsend, WA 98368

Warm Days. Warm Nights.

## SOAK ON THE SOUND

SALTWATER SOAKING TUBS | SAUNAS | RETAIL  
LIBATIONS | OUTDOOR LOUNGING

[soakonthesound.com](http://soakonthesound.com)

360.385.4100

**Hope, the Orca at the Museum**

**Live Marine Animals at the Aquarium**


**PORT TOWNSEND MARINE SCIENCE CENTER**

Inspiring Conservation of the Salish Sea

**TWO LOCATIONS:**  
Fort Worden State Park  
Aquarium on pier & Museum on shore

**1001 Water Street**  
in downtown Port Townsend  
Visitor Center & Store

**Downtown Visitor Center & Store**

SCAN THE CODE  for hours & admission!

360.385.5582 | [www.ptmsc.org](http://www.ptmsc.org)



CONNECT • EXPLORE • CELEBRATE

# PORT TOWNSEND FILM FESTIVAL

SEPT 21-24

Buy Passes Now!  
Use discount code  
**PTFF23AWAY**  
for 10% off



[ptfilmfest.com](http://ptfilmfest.com)



KEY  
CITY  
FISH  
COMPANY



MEAT  
SEAFOOD  
POULTRY

Fresh Wild Seafood  
All Natural Meats  
Free-Range Poultry  
Specialty Sausages  
Game Meats • Smoked Salmon  
**Tacos To-Go** • and so much more....

*We will filet for free!*

In the Boat Yard • 307 10th St.  
(360) 379-5516 • [www.keycityfish.com](http://www.keycityfish.com)



Foodco-op

*Shop Like a Local*

ORGANIC PRODUCE • GROCERY • DELI  
OPEN DAILY 8AM - 9PM  
414 KEARNEY STREET, PORT TOWNSEND, WA  
[WWW.FOODCOOP.COOP](http://WWW.FOODCOOP.COOP)



# Discover History



Find out more • [www.ptleader.com](http://www.ptleader.com)

# Enjoy Olympic Peninsula

Olympic National Park • Pacific Beaches & Hoh Rain Forest  
Wild & Scenic Rivers • Kalaloch Beach • Historic Towns

*From Sea - to - Summit & Canal - to - Coast*



Port Ludlow  
Port Hadlock  
Chimacum



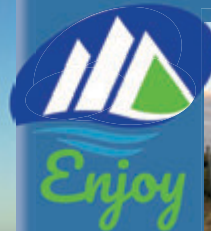
*Four Seasons*



*Adventures for All*



Marrowstone Island  
Port Townsend  
Brinnon & Quilcene



*Jefferson County - the Heart of the Olympics*

[www.EnjoyOlympicPeninsula.com](http://www.EnjoyOlympicPeninsula.com)

360-437-0120

*Start your Journey at the*

Olympic Peninsula Gateway  
Visitors Center  
The "Log Cabin" at Hwy's 104 & 19

# chimacum corner farmstand

## NATURAL GROCERY & NURSERY

Provisions for all Olympic Peninsula Escapades **HERE!**

Voted **BEST PRODUCE** Jeff. County in 2019, 2020, 2021, 2022



**GREENHOUSE FUN**-Everything for your organic garden!



**HYPER-LOCAL** Veggies, Meats, Cheese, Breads, Grains, Krauts, Beers, Ciders, Wines, Soaps... and so much more!

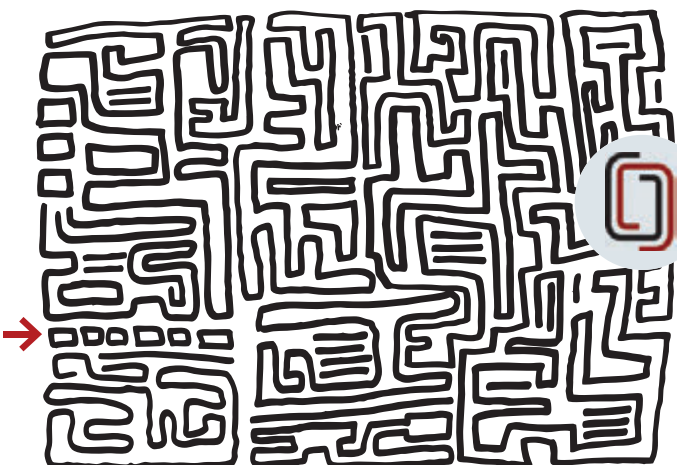


**HOUSEMADE EATS**- Grab n' Go sandwiches, salads, and sweets, with **GF and VEGAN** options



9122 Rhody Dr, 360-732-0107  
OPEN DAILY 9-7, chimacumcorner.com

Where's the poetry?



Right here.

CopperCanyonPress.org



SCAN ME

Copper Canyon Press  
Building 313  
Fort Worden, State Park  
Port Townsend

Poetry readers and  
book buyers welcome!

**VOTED JEFFERSON COUNTY'S BEST IN:**  
Best Restaurant • Best Chowder/Soup • Best Salad  
• Best Lunch Special • Best Vegetarian

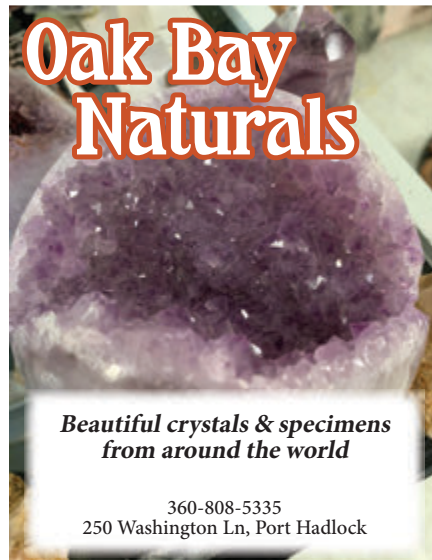
**TOMMYKNOCKER'S**

CORNISH  
PASTY

Pine-In/Carry-Out • 360.344.2519

711 Water St, Port Townsend • tommyknockersCornishPasty.com

## Oak Bay Naturals



Beautiful crystals & specimens  
from around the world

360-808-5335  
250 Washington Ln, Port Hadlock

# YEARN TO EXPLORE

## UNDERRATED TRAILS ON THE OLYMPIC PENINSULA

*Abundant wildflowers such as lupine can be seen along the Klahhane Ridge Trail during the summertime. Photo courtesy of Olympic Peninsula Visitor Bureau.*

**T**here's something about the sprawling mountains, riveting rainforest, and rugged coastline on the Olympic Peninsula that yearns for exploring. While spots like Hurricane Ridge and the Hoh Rainforest get all the love from visitors, the Peninsula contains a wide array of unique and lesser-known places to peruse. Considering the hundreds of trails across Olympic National Park and around the Peninsula, here's five regional locales to add to the hiking list this summer.

## 1. SOL DUC HOT SPRINGS

Located 12 miles into the northern end of Olympic National Park, the Sol Duc Hot Springs are the perfect visit for those in need of a natural detox. Located at 12076 Sol Duc Hot Springs Road and available by drive, the hot springs also include a resort for guests looking for a longer stay, but people not staying at the resort can still use the springs by paying an entrance fee. Better yet, the hot springs are in close proximity to a collection of trails and sites, with the 2.5-mile Mink Lake Trail and Lovers Lane Trail (5.8 miles) both starting right at the resort. To learn more about the Sol Duc Hot Springs, visit [www.nps.gov/olymp/hot-springs.htm](http://www.nps.gov/olymp/hot-springs.htm).

## 2. UPPER LAKE LENA

The Upper Lake Lena Trail is an amazing hiking destination for the more experienced of explorers. With a 12-mile hike to get to the trailhead, Upper Lake Lena isn't for the faint of heart, but it boasts mesmerizing views of the lake and surrounding mountain ridges along the eastern side of Olympic National Park. The Lower Lake Lena Trail may be one of the more popular destinations for Peninsula travelers, but those who venture to the upper part can leave the crowds behind for a tranquil trail experience. For more information about the Upper Lake Lena Trail, go to [wta.org/go-hiking/hikes/upper-lena-lake](http://wta.org/go-hiking/hikes/upper-lena-lake).

## 3. KLAHHANE RIDGE

Exquisite views of nature's bounty will encompass the views along the Klahhane Ridge Trail. The 5-mile trail can be moderately difficult to trek with 1,700 feet of elevation gain, but it's well worth the effort to see meadows of wildflowers, jaw-dropping views, and local fauna. To access the trailhead, hikers can connect from multiple points, with the Switchback Trailhead at Hurricane Ridge being the easiest access point. It's best to tour the Klahhane Ridge Trail during the summer to view Indian paintbrush, lupine, glacier lilies, and other beautiful meadow flowers along the way. Not to mention, one might come across mountain goats, marmots, and black bears along the way. Go to [wta.org/go-hiking/hikes/klahhane-ridge](http://wta.org/go-hiking/hikes/klahhane-ridge) to learn more about the underrated trail.

## 4. OLYMPIC DISCOVERY TRAIL

For those looking for a longer expedition on a more accessible path, the Olympic Discovery Trail is the perfect compromise. Currently 80 miles in total and set to expand to 130 miles once finished, the trail spans from Port Townsend to La Push. Much of the path goes along an old railroad, with existing roads and trails connecting the Olympic Discovery Trail between La Push and Port Townsend. The trail can be biked or walked and allows



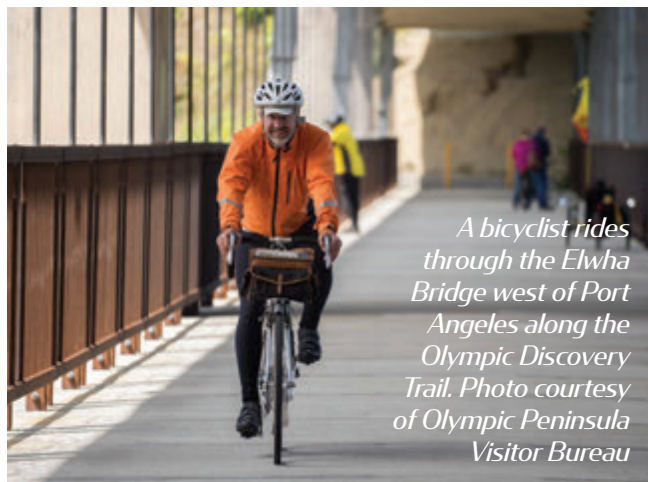
*The Sol Duc Hot Springs Resort is an ideal way to enjoy Sol Duc's serenity and relaxation while soaking in the beneficial minerals. Photo courtesy of Olympic Peninsula Visitor Bureau*

for visitors to take on sections of the pathway or go all in for a multi-day experience. For more information about the Olympic Discovery Trail, go to [olympicpeninsula.org/stories/olympic-discovery-trail](http://olympicpeninsula.org/stories/olympic-discovery-trail).

## 5. STAIRCASE RAPIDS LOOP

Located at the Staircase entrance at the southeast end of Olympic National Park is the Staircase Rapids Loop. While the path is a relatively popular spot for visitors to the Peninsula, it marks an easy starter trail for folks just getting into hiking or travelers who want to see the aquatic beauty of the national park without spending their entire day hiking. The trail offers exquisite, up-close views of the Skokomish River and Lake Cushman — all within a 49-minute trek. The path is also well maintained with only 213 feet of elevation gain, making for a solid beginner trail to explore.

To learn more, visit [alltrails.com/trail/us/washington/staircase-rapids-nature-loop-trail-four-stream-to-north-fork](http://alltrails.com/trail/us/washington/staircase-rapids-nature-loop-trail-four-stream-to-north-fork).



*A bicyclist rides through the Elwha Bridge west of Port Angeles along the Olympic Discovery Trail. Photo courtesy of Olympic Peninsula Visitor Bureau*

# WEST

## VISITOR INFO CENTERS

### OLYMPIC NATIONAL PARK

#### VISITOR CENTER

3002 Mount Angeles Road  
Port Angeles, WA 98362  
360-565-3130 • [nps.gov/olym](http://nps.gov/olym)

### FORKS CHAMBER OF COMMERCE

#### ("Twilight" tour center)

1411 S Forks Avenue,  
Forks, WA 98331  
360-374-2531  
[info@forkswa.com](mailto:info@forkswa.com) • [forkswa.com](http://forkswa.com)

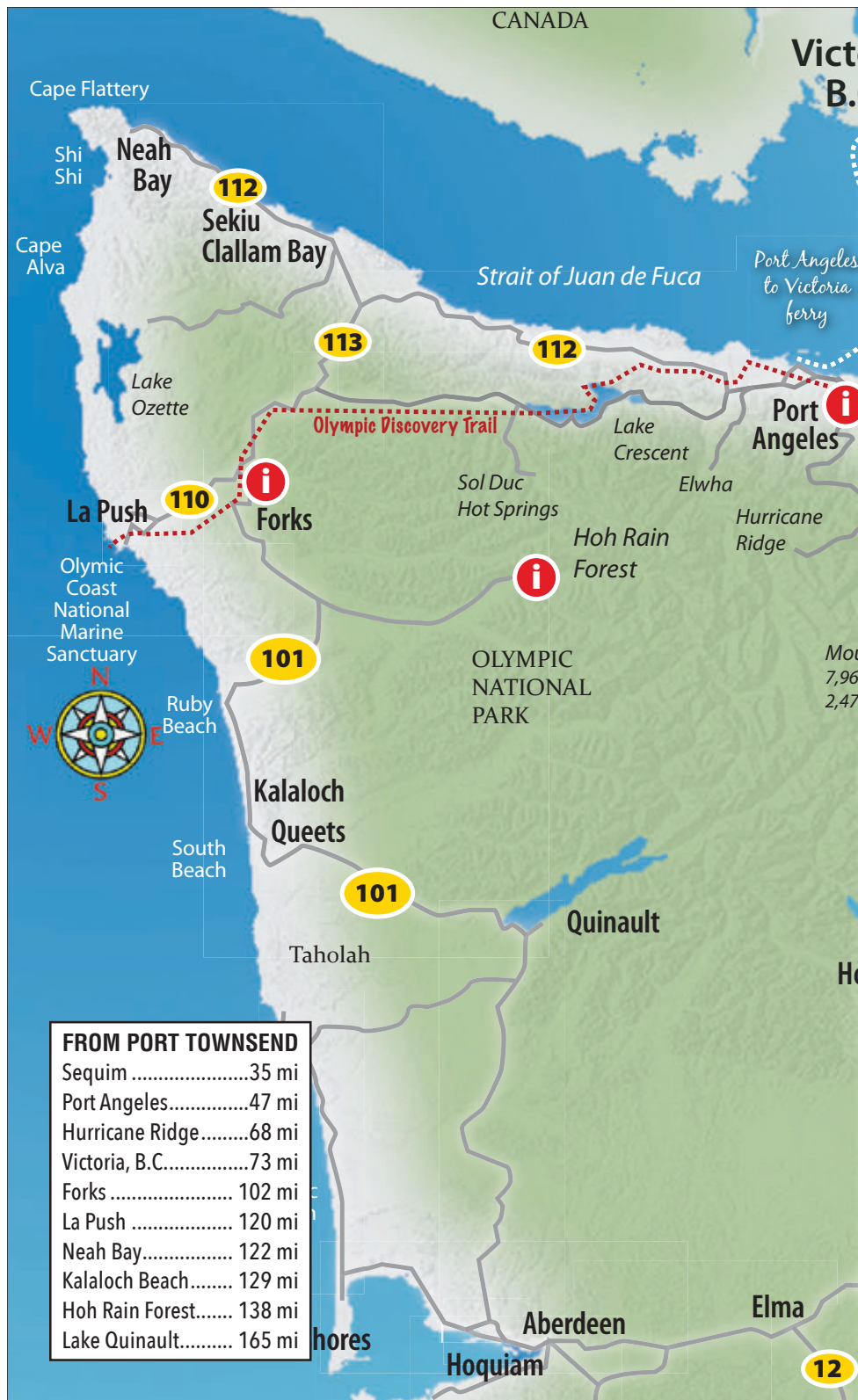
### SEQUIM-DUNGENESS VALLEY

#### CHAMBER OF COMMERCE

1192 E. Washington St.,  
Sequim, WA 98382  
360-683-6197, 800-737-8462  
[info@sequimchamber.com](mailto:info@sequimchamber.com)  
[sequimchamber.com](http://sequimchamber.com)

### PORT ANGELES REGIONAL CHAMBER OF COMMERCE & VISITOR CENTER

121 E. Railroad Ave.,  
Port Angeles, WA 98362  
360-452-2363 • [info@portangeles.org](mailto:info@portangeles.org)  
[portangeles.org](http://portangeles.org)



**TIDE TABLE FOR OLYMPIC NATIONAL PARK**  
[nps.gov/olym/planyourvisit/tides-and-your-safety.htm](http://nps.gov/olym/planyourvisit/tides-and-your-safety.htm)

# EAST VISITOR INFO CENTERS

## PORT TOWNSEND VISITOR INFORMATION CENTER

2409 Jefferson St., Suite B  
Port Townsend, WA 98368  
360-385-7869 or 888-ENJOYPT  
[enjoypt.com](http://enjoypt.com)

## OLYMPIC PENINSULA GATEWAY VISITOR CENTER

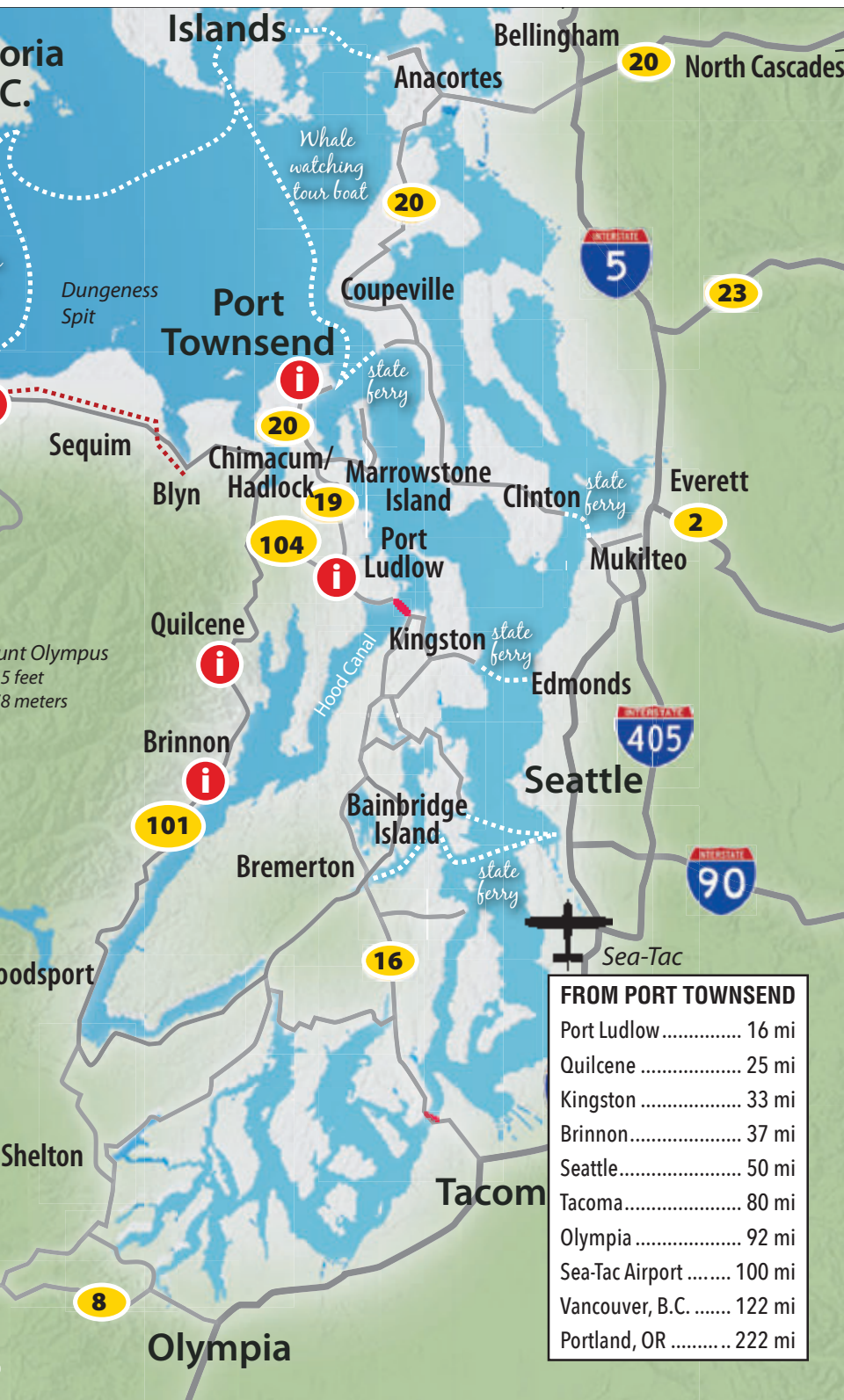
Six miles from Hood Canal Bridge,  
at the junction of State Route 104  
and State Route 19 93 Beaver Valley  
Road (State Route 19),  
Port Ludlow, WA 98365 • 360-437-0120  
[info@enjoyolympicpeninsula.com](mailto:info@enjoyolympicpeninsula.com)  
[enjoyolympicpeninsula.com](http://enjoyolympicpeninsula.com)

## QUILCENE VISITOR CENTER

295142 U.S. Highway 101,  
Quilcene, WA 98376 • 360-765-4999  
[visitorcenter@embarqmail.com](mailto:visitorcenter@embarqmail.com)  
[emeraldtowns.com](http://emeraldtowns.com)

## BRINNON VISITOR CENTER

306144 U.S. Highway 101,  
Brinnon, WA 98320 • 360-796-4350  
[visitorcenter@embarqmail.com](mailto:visitorcenter@embarqmail.com)  
[emeraldtowns.com](http://emeraldtowns.com)



FROM PORT TOWNSEND	
Port Ludlow	16 mi
Quilcene	25 mi
Kingston	33 mi
Brinnon	37 mi
Seattle	50 mi
Tacoma	80 mi
Olympia	92 mi
Sea-Tac Airport	100 mi
Vancouver, B.C.	122 mi
Portland, OR	222 mi

## WASHINGTON STATE FERRIES

Check the schedule at [wsdot.wa.gov/ferries](http://wsdot.wa.gov/ferries).  
Call WSF Customer Service at 888-808-7977





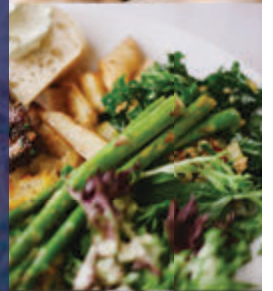
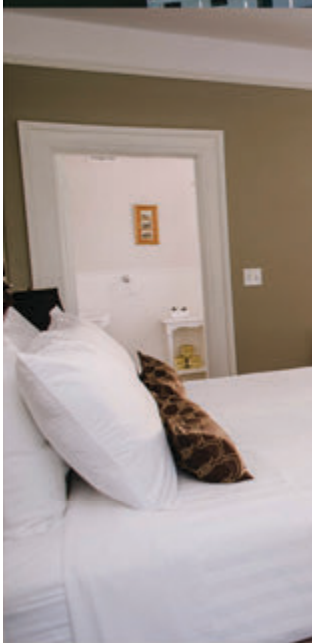
STAY • MEET • EAT • PLAY

Choose your adventure with  
Fort Worden Hospitality  
by your side!



[fortworden.org](http://fortworden.org)

360.344.4400







## Vacation Houses

Choose from one of our historic houses nestled on the 429 acre property and experience the wildlife and nature this calming coastal Fort has to offer.

## Weddings & Group Services

Looking to celebrate your love or host a group conference or retreat, our sales and catering team is ready to work their magic to make your event come alive.

## Restaurants

The Guardhouse Pub, Reveille Cafe, and the Cablehouse Canteen are all located on the Fort Worden grounds offering a variety of dining options.





# CONCERTS IN·THE·BARN

*Chamber Music at its Finest!*

**FREE TO THE PUBLIC**  
 July 29<sup>th</sup> - August 27<sup>th</sup>  
 Weekends and occasionally  
 midweek!

Concerts start at 2pm

Dates & details at

[ConcertsInTheBarn.org](http://ConcertsInTheBarn.org)

7360 Center Rd., Quilcene, WA 98376

(360) 732-0732

[NorthwindArt.org](http://NorthwindArt.org)

Learn, see, grow  
with us!

Art classes for all ages  
at Fort Worden

Jeanette Best Gallery  
701 Water St.

Grover Gallery  
236 Taylor St.



*Trumpeters by Kerry Tremain*

**NorthwindArt**  
 NONPROFIT SCHOOL, EXHIBITS, AND ARTIST RESOURCES



THE ADAMS PRAGGE HOUSE

Victorian Bed & Breakfast | Port Townsend

[WWW.ADAMSPRAGGEHOUSE.COM](http://WWW.ADAMSPRAGGEHOUSE.COM) | 360.301.2969

PORT TOWNSEND

## Arts & Crafts Guild

Celebrates 52 YEARS as a self-supporting non-profit arts organization, providing arts scholarships to local students and helping to fund other cultural activities in Jefferson County



**32<sup>nd</sup> Annual Uptown Street Fair**

**Aug. 19** Tyler St. & Lawrence St., uptown

**52<sup>nd</sup> Annual Crafts by the Dock Fair**

**Sept. 9 & 10** Madison St. & Water St., downtown

**32<sup>nd</sup> Annual Holiday Arts & Crafts Fair**

**Nov. 24 & 25** PT Community Center (3 floors),  
Lawrence & Tyler, uptown

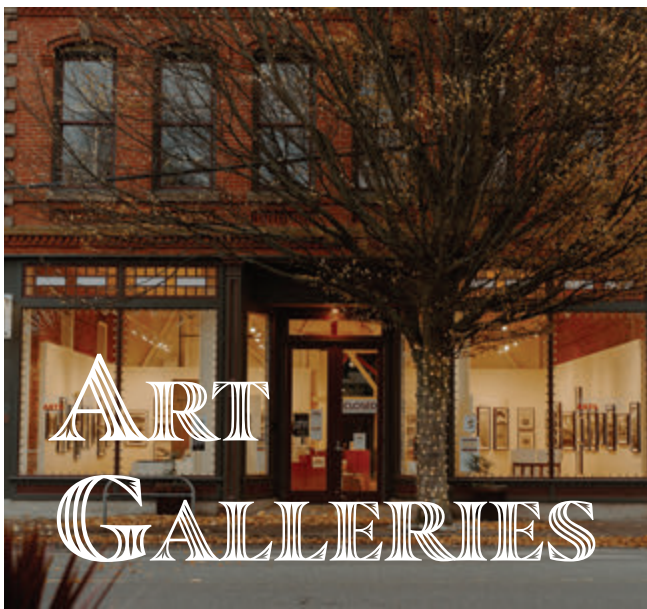
applications for fairs & scholarship applications available at  
[porttownsendartsguild.org](http://porttownsendartsguild.org) or CALL 360-774-6544

## Breathtaking Waterfront View



BREAKFAST - LUNCH  
 DINNER - SPIRITS

1539 Water St. • 360-385-1461



By Alli Patton

With western shores kissed by the Pacific, eastern beaches caressed by the Sound, and the miles inbetween untouched by civilization, Jefferson County — and the Olympic Peninsula as a whole — has a lot to offer in the way of natural beauty. There is no doubt this place has inspired and influenced a lot of the artwork found around the community.

Maps of the county are dotted with multiple art galleries where visitors can find just as much visual stimulation indoors as they can outside.

The Port Townsend School of the Arts and the Northwind Arts Center recently married as one

organization, formally becoming Northwind Art. An institution of education, exhibition, and advancement, Northwind Art operates both the Grover Gallery and the Best Gallery in downtown Port Townsend. Located at 236 Taylor St., Grover Gallery features a wide array of rotating exhibits. The Best Gallery is positioned at 701 Water St. and is equipped with two different exhibit spaces. Visit [northwindart.org](http://northwindart.org) to see all there is to explore at their galleries.

Representing artwork from the Coast Salish, Haida, Nuu-chah-nulth, Tlingit, and Cowichan tribes, the Pacific Traditions Gallery offers visitors a look at original art from The First People of the North American Coastal Tribes. This gallery can be found at 637 Water St. in Port Townsend. Learn more at [pacifictraditions.com](http://pacifictraditions.com).

Also located on Port Townsend's Water Street is the fine art cooperative, Port Townsend Gallery. It features the work of local artists in its indoor and outdoor exhibit spaces. Find more information at [porttownsendgallery.com](http://porttownsendgallery.com).

Port Townsend's Gallery 9 is another Water Street art hub. With revolving art, ceramic, and jewelry exhibits, you can always spot something new here. Visit [gallery-9.com](http://gallery-9.com) for more.

Port Ludlow Art League is another cooperative gallery in the county. Located on Oak Bay Road in Port Ludlow, this gallery celebrates a community of artists. See the original art, photography, fiber and wood art, and more that grace the gallery walls. Information at [portludlowart.org](http://portludlowart.org).

Come see the art that plays a big role in the community. Support the galleries that support our artists.

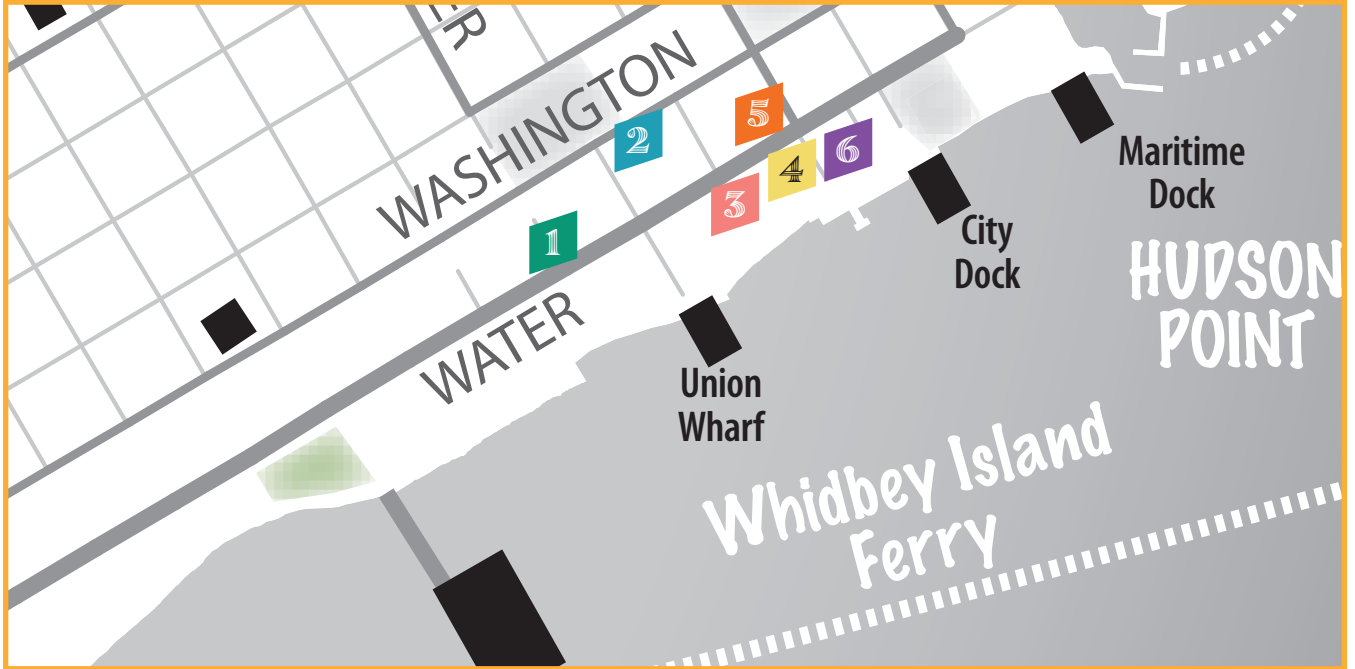
**omf** OLYMPIC MUSIC FESTIVAL  
FORT WORDEN | PORT TOWNSEND  
AUG 12-SEPT 10

Tickets: 360-385-9699  
[olympicmusicfestival.org](http://olympicmusicfestival.org)

Ray Chen | Violin  
featured artist Sept 9 & 10

SUMMER CHAMBER MUSIC SERIES

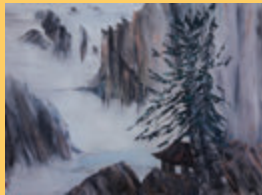
# PORT TOWNSEND GALLERY WALK



**HOME OF THE  
NORTH OLYMPIC  
ARTIST COOPERATIVE**

*Local Art  
Paintings  
Photography  
Jewelry  
Woodwork  
Glass Art  
Ceramics  
Hats & Scarves  
Cards*

1012 Water Street  
(one block from the ferry)  
gallery-9.com  
360-379-8881



Ann Arscott



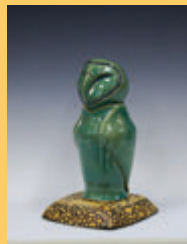
KarenLee Eaton



Jon Geisbush



Debbie Cain



Mike Middlestead



Katy Morse



Nancy Rody



Larry & Linda Gonzales



Sandra Smith-Poling



Susan Martin Spar



## 1 GALLERY 9

Home of the North Olympic Artist Cooperative. Local art, Paintings, Jewelry, Photography, Woodwork, Ceramics, Drums, and Cards

**Address:** 1012 Water St., Port Townsend WA 98368

**Contact:** 360-379-8881 • [Gallery-9.com](http://Gallery-9.com)



## 2 GROVER GALLERY

Part of nonprofit Northwind Art. Work by local and regional artists, jewelers and makers. Open noon to 5 p.m. Thurs. - Mon. First Saturday Art Walk evenings open until 8 p.m.

**Address:** 236 Taylor St., Port Townsend WA 98368

**Contact:** 360-344-4479 • [NorthwindArt.org](http://NorthwindArt.org)



## 3 PORT TOWNSEND GALLERY

Voted Best Gallery in Port Townsend, and run by members/artists, this diverse cooperative gallery features some of the best artists in the region. The artists frequently cycle their work, so each visit will feel unique.

**Address:** 715 Water St., Port Townsend WA 98368

**Contact:** 360-379-8110 • [www.porttownsendgallery.com](http://www.porttownsendgallery.com)



## 4 JEANETTE BEST GALLERY

Part of nonprofit Northwind Art. Voted Pt Leader's Best Gallery 2021. Two downtown galleries and a school at Ft Worden. Open noon to 5 p.m. Thurs. - Mon. First Saturday Art Walk evenings open until 8 p.m.

**Address:** 701 Water St, Port Townsend

**Contact:** 360-379-1086 • [NorthwindArt.org](http://NorthwindArt.org)



## 5 EARTHENWORKS

Voted as one of the Top 10 Retailers of American Craft. The Northwest's best source for fine art and crafts.

**Address:** 702 Water St., Port Townsend WA 98368

**Contact:** 360-385-0328 • [earthenworksgallery.com](http://earthenworksgallery.com)



## 6 PACIFIC TRADITIONS

A gallery that offers original artwork from The First People of the North American Coastal Tribes. Some of which include Coast Salish, Haida, Nuu-chah-nulth, Tlingit, and Cowichan.

**Address:** 637 Water Street Port Townsend

**Contact:** 360.385.4770 • [pacifictraditions.com](http://pacifictraditions.com)

*We'll get  
you  
underway*

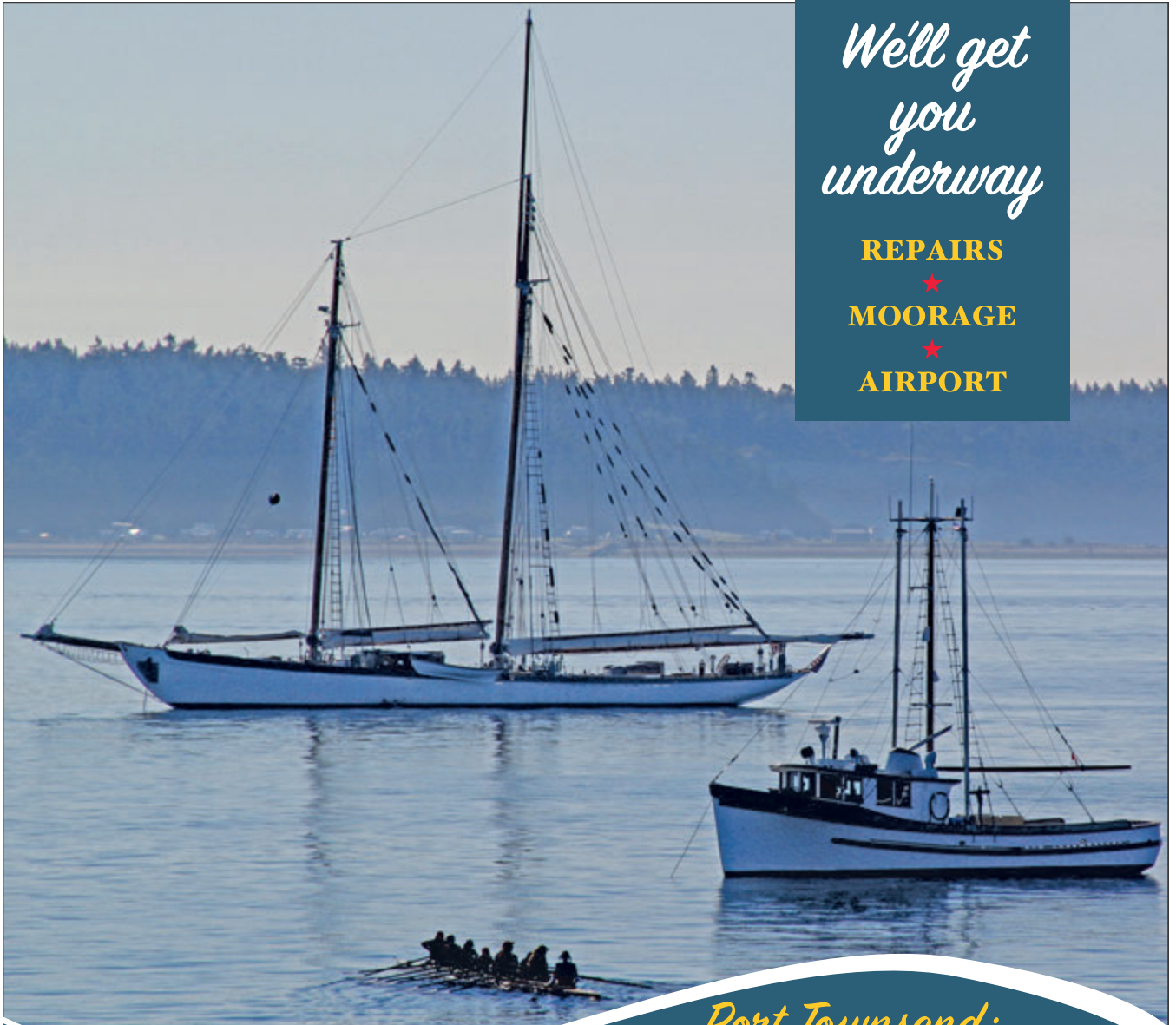
**REPAIRS**



**MOORAGE**



**AIRPORT**



*Port Townsend:  
A Seaport like no other*



**360-385-6211**  
portofpt.com

**BOAT HAVEN BOATYARD & SHIPYARD:** Over 400 of the world's best marine trades professionals are based at the Boat Haven. Hire the pros or do-it-yourself. Three lifts carry vessels up to 330 tons. Call for details: 360-385-6211.

**POINT HUDSON MARINA & RV PARK:** Over 50 slips for visitors at the edge of Port Townsend's historic downtown. Water, power, laundry, showers. New jetty protects the marina. To reserve moorage or rv: [www.portofpt.com](http://www.portofpt.com), click "Point Hudson," or call 360-385-2828.

**JEFFERSON COUNTY INTERNATIONAL AIRPORT:** Land on our new runway; visit the historic airplanes in the Port Townsend Aero Museum; and dine at the famous Spruce Goose Cafe.

by Laura Jean Schneider

Located on the furthest point of the Quimper Peninsula, Port Townsend has always had some advantages in the maritime world. At the mouth of Puget Sound, seafaring vessels found a welcome stopover before heading on into the Pacific Ocean. By 1894, the growing town had become a prestigious official US Customs stop, and all foreign vessels were required to drop anchor before continuing on their journey elsewhere.

Chandleries sprouted up. Crew were in high demand. A captain could expect to find virtually anything he needed to service a ship in Port Townsend in the late nineteenth century.

As the little seaport town boomed, ornate Victorian mansions dotted the hillsides. The city seemed poised to become a major industry player.

But the railroad never made it to Port Townsend, isolating suppliers and increasing the difficulty of bringing in goods.

New steam-powered ships blasted through rough seas that made wooden boats all too thankful to go ashore for a spell. Then Port Townsend suffered from the economic



downturn of 1893, helplessly watching ships pass right by the seaside town.

In 1913, stripped of customs duties, which were relocated to Seattle, the maritime industry seemed doomed.

With renewed vision, the city clamored to become an official sea port district, and in 1924 did so. But the later years were tough on the port, which while rich in ideas, lacked significant funding.

The port's first capital project, Port Townsend's Boat Haven Marina, was completed in the early 1930s. Along with the Port Townsend Yard, which expanded to include the Port Townsend Boat Yard (nicknamed "The Boatyard" by locals),

these staples continue to create the bulk of the port's annual revenue. Additionally, the port manages an airport, three marinas, an RV park, and numerous boat launches, among other enterprises.

The Wooden Boat Festival, launched in 1978, helped jump-start a renewed interest in wooden boats. With the addition of the Northwest School of Wooden Boatbuilding in 1981, Jefferson County has developed a reputation for excellent boat building, care, retrofitting, and design for boats of all kinds.









**FOR ALL YOUR BBQ CRAVINGS!**

**1980 W. SIMS WAY**

**BY THE SECOND ROUNDABOUT  
ONLY TWO MILES FROM THE FERRY  
OPEN WEDNESDAY THROUGH SATURDAY**

**(360) 774- 6627**



Come visit the

# COAST ARTILLERY MUSEUM

Special Group Tours • 360-385-0373 • [coastartillerymuseum.org](http://coastartillerymuseum.org)



The museum features interesting objects of coast artillery history, photos and more about Fort Worden and the coast artillery in Puget Sound. *Visit us soon!*

**LOCATED AT  
FORT WORDEN STATE PARK  
Facing the parade ground  
next to the Park HQ**

Seasonal hours may vary.



# SAIL

PORT TOWNSEND

**Looking for a fun and educational experience? Come sail with us!**

Private two-hour sailing trips for 2-4 people  
Mon.-Sun. | 12 p.m. & 3 p.m. | June-Sept.

Enjoy the breeze, time on the water, fantastic views, and wildlife encounters. Ask about flotilla sails for parties of 6 or more!"



[Sailporttownsend.com](http://Sailporttownsend.com)



We are proud to be a woman-owned small business.

**Call today! 360-797-9105**

by Cate Winters

**P**ort Townsend is a quaint coastal town that has long been a destination for sailors from around the world. With its stunning natural beauty, protected harbor, and rich maritime history, it's no wonder that Port Townsend is a hub for sailing enthusiasts. For those looking to explore the waters surrounding this picturesque town, there are several organizations that offer unique sailing opportunities.

One such organization is Left Coast Charters. Founded by Captain Dave Johnson, Left Coast Charters offers customized sailing experiences that cater to the needs and desires of each individual guest. Whether you're a seasoned sailor or a novice looking to learn the ropes, Captain Dave and his crew will make sure you have an unforgettable experience on the water. From day sails to multi-day trips, Left Coast Charters provides a range of options to suit any schedule or budget. [left-coast-charters.com](http://left-coast-charters.com)

Another organization that offers sailing opportunities is Sail Port Townsend. With a fleet of boats ranging from 14 to 50 feet in length, Sail Port Townsend provides a variety of sailing experiences for sailors of all levels. From basic sailing lessons to advanced courses, Sail Port Townsend is dedicated to helping sailors build their skills and confidence on the water. In addition to sailing lessons, Sail Port Townsend also offers yacht charters, sunset cruises, and private events. [sailporttownsend.com](http://sailporttownsend.com)

For those looking to immerse themselves in the maritime culture of Port Townsend, the Northwest Maritime Center is the perfect place to set anchor. Founded in 2005, the Northwest Maritime Center is dedicated to promoting and preserving the maritime traditions



# SAILING, SAILING, OVER THE OCEAN BLUE

of the Pacific Northwest. In addition to offering sailing lessons and boat rentals, the center also hosts a variety of events and programs that celebrate the region's maritime heritage. From wooden boat festivals to boatbuilding workshops, the Northwest Maritime Center is a hub for all things nautical. [nwmaritime.org](http://nwmaritime.org)

One of the most popular events hosted by the Northwest Maritime Center is the annual Wooden Boat Festival. Held each September, the festival attracts thousands of visitors from around the world to Port Townsend's historic waterfront. The festival features a wide range of activities, including boatbuilding demonstrations, live music, food and drink vendors, and of course, plenty of opportunities to go sailing. Whether you're a seasoned sailor or a

landlubber looking to try something new, the Wooden Boat Festival is not to be missed.

Overall, Port Townsend offers a wealth of opportunities for sailors of all levels and interests. Whether you're looking for a quiet day sail, a week-long adventure, or a chance to immerse yourself in the region's rich maritime culture, there's something for everyone in this charming coastal town. So whether you're a local or a visitor from afar, be sure to check out Left Coast Charters, Sail Port Townsend, and the Northwest Maritime Center for all of your sailing needs. With their expert guidance and the stunning beauty of the Pacific Northwest as your backdrop, you're sure to have an unforgettable sailing experience in Port Townsend.



COMMUNITY OWNED FOR OVER 10 years

**QUIMPER**  
Mercantile Co  
PORT TOWNSEND, WA

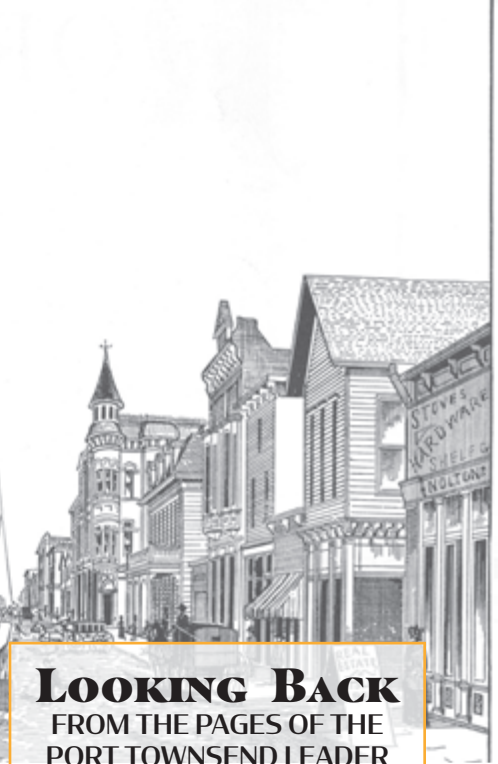
Photo Courtesy: Deerfrom LLC

## Your Local Source for Outdoor Adventure Gear

*From essentials to the extraordinary we've got you covered:*

Camping & Fishing Gear  
Work Gear, Boots & Shoes  
Men's & Women's Apparel  
Children's Clothing & Toys  
Housewares & Accessories  
Sewing & Art Supplies  
Gifts & Gourmet Foods  
Pet Supplies & more!

360.385.9595 | 1121 Water Street, Port Townsend | [QuimperMerc.com](http://QuimperMerc.com)



## LOOKING BACK FROM THE PAGES OF THE PORT TOWNSEND LEADER

### OCTOBER 1897

“Klondike Gold! The Port Townsend Board of Trade respectfully asks your attention to the fact that persons bound to the great gold fields of the North can obtain everything they need from the merchants of Port Townsend, at prices from 5 to 20 percent less than in any other city of Puget Sound.”

### MAY 1915

“Word was received in this city yesterday afternoon that a Ford touring car driven by Frank Hart had completed the trip over the Olympic Highway [U.S. Highway 101 along Hood Canal] from Quilcene to Olympia. Hart is the first man to have covered the entire distance.”

### MARCH 1918

A schooner arrives in Port Townsend Bay and stands out from the other vessels. “The Wergerland is minus two masts, the sticks having gone over the side when the schooner was 100 miles outside Cape Flattery.”

# A GLIMPSE OF OUR PAST

**T**ake advantage of your getaway in Jefferson County by checking out our history with a visit to one of our museums. You might also want to investigate the Jefferson County Historical Society Research Center, shared by the Jefferson County Genealogical Society.

Along with traditional museums — including the Rothschild House, the smallest state park in Washington — we have the Kelly Art Deco Light Museum and the Port Townsend Aero Museum.

## JEFFERSON COUNTY

### HISTORICAL SOCIETY MUSEUM

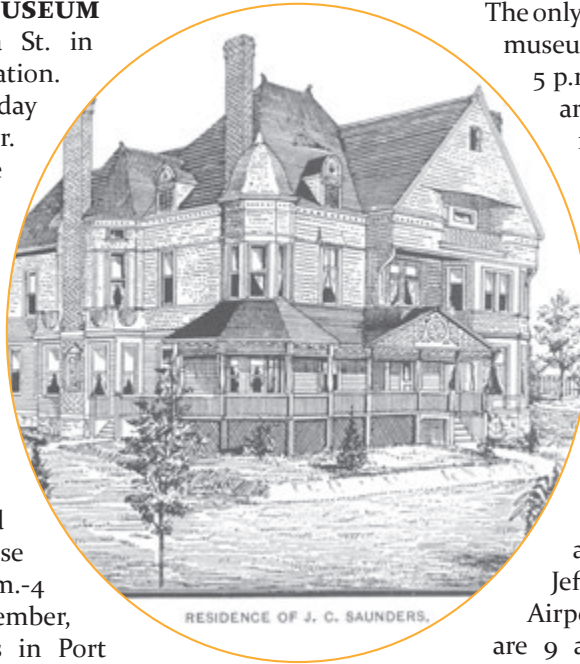
Found in Port Townsend’s historic City Hall at 540 Water St. The official archive for the Port Townsend & Jefferson County Leader newspaper. Museum hours are 11 a.m.-4 p.m. Thurs.-Sun. Contact 360-385-1003; visit [jchsmuseum.org](http://jchsmuseum.org). TIP: The museum gift shop features notions from from myriad local makers.

## QUILCENE HISTORICAL MUSEUM

Located at 151 E. Columbia St. in Quilcene. Admission is by donation. Hours are 1-5 p.m. Friday-Monday from April to September. Call 360-765-4848 for more information and be sure to check out their vacation rental, Worthington Park at [worthingtonparkquilcene.com](http://worthingtonparkquilcene.com).

## ROTHSCHILD HOUSE STATE PARK HERITAGE SITE

A historic home with original furnishings of the Rothschild family, who inhabited the house from 1868-1954. Hours are 11 a.m.-4 p.m. daily, May through September, at Jefferson and Taylor streets in Port Townsend. Contact 360-379-8076 or 360-385-1003; visit [jchsmuseum.org/Rothschild/house.html](http://jchsmuseum.org/Rothschild/house.html).



## KELLY ART DECO LIGHT MUSEUM

The only known American art deco lighting museum in the world, is open daily, 10 a.m.-5 p.m. On exhibit at the free museum are rare, one-of-a-kind art deco fixtures selected from a 30-year collection of more than 2,000. Located in the Kelly Building, 2000 Sims Way, Port Townsend.

Contact 360-379-9030; visit [thedecomuseum.com](http://thedecomuseum.com).

## PORT TOWNSEND AERO MUSEUM

Provides work-based opportunities for youths and young adults, and restores, flies and displays antique aircraft at Jefferson County International Airport south of Port Townsend. Hours are 9 a.m.-4 p.m. Wednesday through Sunday. Contact 360-531-0252 or email [ptam@olympen.com](mailto:ptam@olympen.com) or [thuotte@waypoint.com](mailto:thuotte@waypoint.com); visit [ptaeromuseum.com](http://ptaeromuseum.com).



**finnriver**  
FARM & CIDER



FARMCRAFTED CIDER  
LIVE MUSIC • LOCAL FOOD  
COMMUNITY EVENTS  
FAMILY FRIENDLY

Voted Best Live Music Venue on  
the Olympic Peninsula! Scan  
the QR code to see the  
Music & Events Calendar.



FOR THE LOVE OF LAND, THE ART OF FARMING & THE SPIRIT OF COMMUNITY.



# WEDDINGS, CIRCUSES & RACES

## WORTHINGTON PARK BECOMES A YEAR-ROUND DESTINATION

by *Brian Cullen*

Worthington Park in Quilcene has emerged from 2022 as truly a year-round destination – welcoming private and public events for every season. Families booked overnight stays at the newly opened and restored Victorian mansion over the winter holidays – and more and more visitors are seeking out the park for unique and memorable experiences.

The “10 acres of possibilities” were extensively landscaped over the winter to host an even broader range of special private and public events. The historically charged and elegant setting of the mansion and surrounding grounds offer couples who might be tying the knot, or those who just want an overnight retreat - an opportunity to pamper themselves in a regal setting for their big day ... or night.

Visitors will enjoy expansive

views of the Olympic Mountains while they enjoy their events alongside the historic barn, beside a tranquil pond or rippling river, wandering the forested trails, or dancing the night away at the Linger Longer covered pavilion. The unencumbered freedom of the meadow and surrounding grounds offers a sprawling space to entertain hundreds of guests at the foot of the mountains and minutes away from the picturesque Quilcene Bay.

While Worthington Park increasingly offers a unique experience for private events it has also expanded its schedule of public events.

First up this year will be the third annual Gravel Unravel “gravel grinder” endurance bike race returning to the park on June 17. The event is produced by Peninsula Adventure Sports out of Port Angeles in partnership with Worthington Park. Gravel Unravel is a race series,

with the Quilcene race - Bon Jon Pass Out, the second of three races. Riders do not have to do all three races, and can sign up for just one or two. Participants can choose one of three different distances, all summiting Bon Jon Pass in the Olympic National Forest. There are seven different racing categories, or participants can choose the non-competitive Gran Fondo ride. Find out more at [GravelUnravel.com](http://GravelUnravel.com).

Back by very popular demand on July 8 is the Up, Up, Up circus for their third year. Founded in 2020, the troupe is a nonprofit touring circus ensemble bringing their performances to all over the Hood Canal region. Their stage is a flatbed truck with a hand cranked crane for aerial acts and a 100-year-old baby grand piano for live music. Their whimsical and fun performances last for about an hour and are geared for all ages. As in years past the circus will be followed by an outdoor

movie on Linger Longer stage – free to the public. Families gather at the park’s Linger Longer meadow for this event to be entertained for the entire afternoon and evening in a beautiful setting.

August 11 will also see the return of the Annual Tasting Gala which, in partnership with local wineries, breweries, and distilleries, is held in the afternoon where visitors enjoy libations and live music under majestic shade trees alongside the historic pond.

The annual Oyster Races half marathon, 10K and 5K, presented by Pacific Seafood, are also returning on September 17. This year they have teamed up with two other nonprofit Olympic Peninsula races – the Rhody Run (May 21) and the North Olympic Discovery Marathon (3-4 June) for a series they have

called Olympic Summer Running! Runners can now look forward to participating in three great summer foot races across the Peninsula in jaw-dropping locations to benefit those in need. Registration and details at: [QuilRaces.com](http://QuilRaces.com).

The fall will also bring the very popular Sheep-2-Shawl Quilcene Fiber Festival (now scheduled for

October 7), showcasing regional fiber artists and our local wool industry. Last year’s event brought a record number of vendors and attendees and for the first time encompassed much of the park’s 10 acres. This year’s event is expected to further expand its offerings.

Finally, the heart and soul of the park, the Quilcene Historical Museum, has enjoyed a refresh of its exhibits this past winter. This work has included updating the museum layout and exhibits to improve visitor appreciation of the region’s history and prepare for what promises to be another year of record visitation. The museum is open from April through September (Friday – Monday).

More details on the happenings at Worthington Park can be found at: [worthingtonparkquilcene.org](http://worthingtonparkquilcene.org).



OPEN FOR THE SEASON!

## World Class Wineries & Cideries

# Come Visit Today!

CHECK EACH WINERY FOR HOURS & EVENT LISTINGS

[OlympicPeninsulaWineries.org](http://OlympicPeninsulaWineries.org)



*Olympic Peninsula*  
**WINERIES**



VANCOUVER ISLAND

Port Angeles Sequim Port Townsend

101 104 SEATTLE

[f](#) Olympic Peninsula Wineries  
[@olympicpeninsulawineries](#)

**Camaraderie Cellars · Eaglemount Wine & Cider · FairWinds Winery**  
**Harbinger Winery · Marrowstone Vineyards · Olympic Cellars · Wind Rose Cellars**



# COUNTY PARKS

COUNTY PARKS OFFER MILES OF TRAILS,  
RESERVATION-FREE CAMPING AND SCENIC PICNICKING

Jefferson County has 20 parks and four campgrounds, with miles of trails for walking, hiking and mountain bike riding, as well as camping, picnicking and relaxing on the beach.

As the weather warms up, these parks offer an alternative to state parks, which often fill up fast and require a Discovery Pass.

A highlight of the county's parks system is that there are no passes required.

Not only that, but Jefferson County's campgrounds do not require a reservation.

"You can usually find a spot at one of the four of them," said Matt Tyler, manager of the Jefferson County Parks and Recreation programs. "If you have not planned ahead and you need a place to stay, try our campgrounds. They are well-maintained and supervised."

## PARKS

### BEAUSITE LAKE PARK

Located at 510 Beausite Lake Road in Chimacum, this 50-acre park has a view of Beausite Lake, a quaint hidden gem in the Chimacum Valley. A newly-remodeled conference center in a woodland setting is available for meetings, weddings, reunions and gatherings. For more information, call 360-732-7222.

### BROAD SPIT PARK

Located on Tarboo Bay, this 40-plus acre wilderness park is accessible only by boat. Here you can view the wildlife that occupies the bay, including a variety of birds, including great blue herons and bald eagles. Take only pictures; leave only footprints.



## CAPE GEORGE TRAILHEAD PARK

Located at 733 Cape George Road in Port Townsend, this trailhead provides easy-access parking for the Larry Scott Trail, with horse trails, single-track bike trails and a pristine view of the water. It also has a toilet and one picnic area.

## COURTHOUSE PARK

Need a spot to relax after a day of shopping in Port Townsend? Rest beneath the maple trees at Courthouse Park at 1820 Jefferson St. Or bring your game face and enjoy playing pickleball or basketball at the courts.

## EAST BEACH PARK

A walk at East Beach Park at 330 East Beach Road in Nordland on Marrowstone Island, provides a beautiful view of Admiralty Inlet, Mount Rainier and Mount Baker, as well as wildlife viewing, a picnic shelter and fireplace for cookouts. This park also has a toilet. TIP: Limited parking.

## GIBBS LAKE PARK

In the last few years, Gibbs Lake Park at 110 Gibbs Lake Road has expanded to nearly 600 acres. The 40-acre freshwater lake has catch-and-release trout fishing, boat launch, swimming beach and toilet. Mountain bikers can enjoy 16 miles of single-track trails. It's the perfect place for an afternoon of fishing, birdwatching or relaxing lakeside.

## HICKS PARK

Launch your boat from the ramp at Hicks Park, located at 1090 Shine Road in Port Ludlow, or sit at the picnic area and enjoy the calm waters of the canal for nature-watching, swimming and relaxing. This one-acre park has a toilet.

## H.J. CARROLL PARK

Located at 9884 State Route 19 in Chimacum, 50-acre H.J. Carroll Park is one of the newest and most developed parks in the county, including the county's first-ever all-abilities accessible playground. The park has two shelters that can be reserved for parties, weddings and reunions. The park also features athletic fields, a BMX bike track, walking paths, a playground, a disc golf course, basketball courts and a picnic area. Enjoy nature by taking a walk through the native plant garden or watch salmon swimming in Chimacum Creek. The park also has access to the Rick Tollefson Trail. It is supervised 24 hours a day by on-site caretakers, and has toilets. TIP: Reservations recommended for athletic fields and shelters. Visit [jeffersoncountywa.myrec.com](http://jeffersoncountywa.myrec.com) to view availability calendar.

## INDIAN ISLAND PARK

This park has multiple areas with a variety of trails. Located at 3456 Fort Flagler Road in Port Hadlock, the lower area has 2 miles of beach-walking, swimming, fishing and clamming at the head of Oak Bay. The upper area offers wide trails with a view of Oak Bay over the bluff, perfect for bird-watching.

## IRONDALE BEACH PARK

Located at 562 Moore St. in Port Hadlock, this 220-acre park is the historic site of the old Irondale Mill. The sandy beach at the mouth of Chimacum Creek offers views of Port Townsend Bay and provides a great place for hand-launching small boats. This park has a toilet.

## IRONDALE COMMUNITY PARK

This park at 61 Alma St. in Port Hadlock, is a neighborhood park with a playground and picnic area, with fields to play baseball, soccer, and football and a basketball court. There is also a drinking fountain and toilets.



# PARKS

## NORTH BEACH PARK

Located at 5880 Kuhn St. in Port Townsend, this beach offers the best sea-glass finds. Walk on the beach to McCurdy Point, where you can see Protection Island and the mouth of Discovery Bay, or go the other direction and head into the trails at the Chinese Gardens and Fort Worden State Park. Great sunset, and views of the San Juan Islands—and, on a clear day, Mount Baker.

## QUILCENE RIVERSIDE PARK

Located at 41 Muncie Ave. in Quilcene, this one-acre park offers a nice view of the Big Quilcene River. Take a rest at the picnic area, do some fishing and observe the natural beauty of the river.

# ATHLETIC FIELDS

## MEMORIAL FIELD

Located at 550 Washington St. in Port Townsend, Memorial Field is an athletic field with a lighted stadium that hosts community and scholastic athletics. To read more about Jefferson County's recreation programs, go to [countyrec.com](http://countyrec.com).

## BOB BATES FIELD

At 84 Elkins Road in Port Hadlock, Bob Bates Field is used by the East Jefferson Little League team. To learn more, visit [ejlittleleague.com](http://ejlittleleague.com).



# CAMP GROUNDS

## LAKE LELAND PARK & CAMPGROUND

Nestled below the Olympic Mountain range is Lake Leland, a beautiful freshwater lake in Quilcene, at 165 Leland Valley Road. Come for the day and use the park's boat ramp for fishing, kayaking and more. Bring your tent and stay the night at the campground. Open from April 1 to Oct. 21, the campground has 22 sites and is \$18 per night. First come, first serve; cash or check only. The maximum vehicle length is 30 feet, and there is no potable water. The park has a picnic area and restrooms

## LOWER OAK BAY CAMPGROUND

The Lower Oak Bay Campground at 301 Portage Way in Port Ludlow is a 30-acre campground with six campsites. Camp on the sandy spit within steps of a lagoon, with bird watching, fishing, kayaking, picnic areas and views of Oak Bay. The campground is open April 1 to Oct. 31 and is \$20 per night. First come, first serve; cash or check only. The maximum vehicle length is 30 feet.

## UPPER OAK BAY CAMPGROUND

Located at 290 Cleveland St. in Port Ludlow, the Upper Oak Bay Campground provides stunning views of Oak Bay, with a playground and restrooms. The campground is open April 1 to Oct. 31 and has 24 campsites, at \$20 per night, and six sites with electricity at \$25 per night. Upper Oak Bay campground has a camp host on site. First come, first serve; cash or check only. The maximum vehicle length is 30 feet.

## QUILCENE PARK & CAMPGROUND

Come for the day to Quilcene Park at 294964 Highway 101 in Quilcene, to enjoy basketball and tennis courts, a skate park, picnic shelter and playground. The campground is open from April 1 to Oct. 31 and has 12 campsites available at \$15 per night. First come, first serve; cash or check only. The maximum vehicle length is 30 feet.



# The Production Alliance



**WHO'S WHO UNDER 40**  
A social networking celebration honoring Jefferson County's up and comers

**APR 27**



**JEFFCO JOBS & TRADES FAIR**  
Connecting local talent with our homegrown job market

**MAY 12**




**CHAUTAUQUA WEEK**  
3-Day weekend of arts, culture, history and civic engagement

**MAY 19-21**



**ALL COUNTY PICNIC**  
Celebrating emergency preparedness and building community resilience

**AUG 20**




**CAKE PICNIC**  
Celebrating community spirit with delicious artisan cake, live music, dancing, and performances

**MAY 20**



**JEFFCO FARM TOUR**  
Celebrating locally grown food, fiber, and farm-made products

**SEPT 16-17**




**FIELD DAY**  
All-ages, family-friendly summertime fun

**JUNE 24**




**OP APPLE & CIDER FESTIVAL**  
Celebrate the season, taste the region

**OCT 13-15**



**BOATYARD BBQ**  
Celebrating the safe return of our fishing fleet and the maritime culture of Jefferson County!

**SEPT 28**



**FIRST NIGHT**  
An all-ages new year's eve extravaganza

**DEC 31**

Learn more at [theproductionalliance.org](http://theproductionalliance.org)

Our Season is Made Possible Thanks to the Generosity of Our Sponsors!





## Organic U-pick Farm & Meadery

Shop our farm store. Sip some mead.  
Explore the trails. Feed the sheep.  
Relax and enjoy a day on the farm.

Farm Hours: Wed-Sun 12-5

Mead Tasting: Sat-Sun 12-5



Lavender Jul-Aug



Flowers Jul-Sep



Pumpkins October



223 Cook Ave Port Townsend  
360-379-2434 wilderbeefarm.com



WINE • BEER • BUBBLIES  
CIDER • CHEESE/DELI  
CHOCOLATES & more!  
*Stop in Today - MIX-A-CASE*  
• Open 7 days a week •

1010 WATER STREET, PORT TOWNSEND  
360-385-7673 • [www.PTWineSeller.com](http://www.PTWineSeller.com)

Follow Us




*Fair Winds* SUMMER HOURS  
FRI - SUN 12-5

**FairWinds Winery**  
family-owned since 1993

Tastings/Flights  
Tours/Events

[www.fairwindswinery.com](http://www.fairwindswinery.com)  
1984 Hastings Ave W, Port Townsend  
(360) 385-6899  fairwindswinerypt

TASTING ROOM, CIDER & ORGANIC ORCHARD



**Alpenfire**<sup>®</sup>  
Port Townsend, Washington



Tasting Room Open Saturdays 12-5pm  
220 Pocket Lane Port Townsend, WA  
360.379.8915 | [alpenfirecider.com](http://alpenfirecider.com)

# EVEN MORE ROOM TO EXPLORE



**INSIDER'S TIP:** A Discover Pass is required to get into some areas of the parks listed below. Also, permits for fishing and shellfish harvesting could be required. For more information on how to obtain a Discover Pass, regulations, fishing seasons and more, visit [parks.state.wa.us](https://parks.state.wa.us), [nps.gov](https://nps.gov) or [fws.gov](https://fws.gov).

## ANDERSON LAKE STATE PARK

Anderson Lake State Park is located in Chimacum, about 10 miles south of Port Townsend, and includes 476 acres of wooded and wetland areas for visitors to enjoy biking, hiking and wildlife.

Located at 1061 Anderson Lake Road, the state park is centered around Anderson Lake, which has 8,250 feet of freshwater shoreline and covers 70 acres.

"Anderson Lake is one of the few parks in the area to offer equestrian and bike trails, which slope down to a lake teeming with birds and wildlife," the Washington State Parks website states.

The park includes boating, 8 miles of hiking trails, 7 miles of bike trails, and 5 miles of equestrian trails.

## DABOB BAY NATURAL AREA

Dabob Bay Natural Area is located about 8 miles northeast of Quilcene and about 23 miles south of Port Townsend. The area was established in 1984 to protect intact salt marsh and sand spit plant communities, according to the Washington Department of Natural Resources.

Dabob Bay's shoreline boasts good fishing for salmon and spawning sea-run trout, and there are places where you can pick up and eat oysters while you fish. In 2009, the state's Natural Area was enlarged as a natural reserve to permit low-impact public use.

The reserve has 2,771 acres of shoreline, marsh and forest. The bay is large, making it an excellent place to explore by boat.

"The natural area includes mature coastal forests, coastal streams, feeder bluffs, forage fish spawning areas, eelgrass beds, native Olympia oyster beds, nearshore tidelands and mudflats utilized by juvenile salmon and shorebirds, and open marine waters used by salmon, marine birds, harbor seals and orcas," according to Washington DNR.

## DOSEWALLIPS STATE PARK

Dosewallips State Park is located in Brinnon, about 44 miles south of Port Townsend, near where the Olympic National Park-born Dosewallips River drains into Hood Canal.

"This freshwater/saltwater park makes a perfect day or weekend trip," according to the Washington State Parks website.

Dosewallips Park has 1,039 acres and 5 miles of shoreline on the Hood Canal and Dosewallips River, known locally as "The Dosie."

Not only does the state park have forests, mountains, rivers and beaches, the area is a delight for clam-diggers, anglers, boaters and beach explorers, the state parks website states.

"Evening may find you grilling up a shellfish dinner and retiring to your cabin or tent, where you'll fall asleep to the sound of the river, enchanted by this lush, green corner of the country," according to DNR.

## FORT FLAGLER HISTORICAL STATE PARK

Located on Marrowstone Island, Fort Flagler Historical State Park was built in the 1890s and active during World War I, WWII and the Korean War. Currently, it houses a military museum and gift shop, which offers tours of gun emplacements and the 1905 military hospital that can be guided or explored freely.

A person visiting the historical area can plan a trip around hiking, boating, kite-flying, beach exploration, saltwater fishing, clam digging and crabbing, according to Washington State Parks.

"Beachfront tent and RV sites boast some of the best views in the region," according to Washington State Parks.

“So gaze out on the Strait of Juan de Fuca to the north, the Olympic Peninsula to the west and Whidbey Island to the east, and breathe deep of the ocean air.”

Fort Flagler Historical State Park comprises 784 acres of marine camping surrounded by about 3 miles of shoreline.

## **FORT TOWNSEND HISTORICAL STATE PARK**

Fort Townsend Historical State Park was built in 1856 to operate an Army base over the years. But a fire in the barracks in 1895 closed down the fort.

The park, located about 6 miles south of Port Townsend, has a 414-acre camping park with 3,960 feet of shoreline on the Port Townsend Bay.

“Fort Townsend provides a quieter alternative to its bigger, busier northern neighbor, Fort Worden,” the Washington State Parks says. “Explore a historic torpedo tower that held state-of-the-art technology during World War II.”

Visitors to Fort Townsend Historical State Park can enjoy self-guided and guided tours of the area, ballfields for children and hiking paths that also allow bikes.

## **FORT WORDEN HISTORICAL STATE PARK**

Covering 433 acres as a multi-use park, Fort Worden Historical State Park has facilities, a conference center, 2 miles of shoreline and more, all co-managed by the Fort Worden Public Development Authority.

In the last century, times changed for the fort, which at one time housed 1,000 troops and officers in training to defend Puget Sound from enemy forces.

“Enjoy a meal in the Guard House

Pub, and peruse the photogenic 1914 Point Wilson lighthouse,” Washington State Parks advises adds. “Explore defunct coastal defense batteries, and imagine the compound teeming with enlisted men, officers and staff during World War I and WWII.”

For those looking for indoor accommodations, Fort Worden Historical State park also offers lodging.

In addition to historical displays, Fort Worden hosts music festivals, conferences and is the headquarters for artist-in-residence programs. Check out the Fort Worden and Centrum organizations’ websites to see what’s going on.

## **OLYMPIC NATIONAL PARK**

Olympic National Park is found mostly in Jefferson County, but sprawls north and south into Clallam and Grays Harbor counties, defining the Olympic Peninsula’s skyline and attracting more than 3 million visitors per year.

Comprising almost 1 million acres, the park embraces vast wilderness, human history, a startling range of ecotones from arid peaks to rain forest, plus more than 70 miles of coastline.

A dozen rivers spring to life in the high country of the park and fall steeply downhill to the Pacific Ocean, Hood Canal and the Strait of Juan de Fuca, providing crucial spawning and rearing for salmon, steelhead and trout, among other species.

President Grover Cleveland created the Olympic Forest Reserve in 1897 to protect the forests of the Olympic Peninsula from poor logging practices. In 1909, President Theodore Roosevelt proclaimed part of the reserve as a national monument. Finally, in 1938, President Franklin D. Roosevelt signed a bill establishing Olympic National Park.

There are only a few roads leading into the park, which makes it a favorite for those who hike, ride horses or float rivers.

“Plan your park activities with time and distance in mind. Olympic is very large and there are no roads that cross the park,” the National Park Service notes. “The summer months of June through September are the busiest time of year.”

Because of its diverse ecosystems, Olympic National Park serves as a laboratory for scientists and students, some informally, some in graduate school programs and some at the on-site NatureBridge campus.

Reservations can be made for local campgrounds, but all other sites are on a first come, first served basis.

## **QUILLAYUTE NEEDLES NATIONAL WILDLIFE REFUGE**

Tucked away on the far West Coast of Jefferson County, Quillayute Needles National Wildlife Refuge is a magnet for birders. Set aside by Teddy Roosevelt in 1907 to protect and enhance habitat for the seabird population, the refuge comprises 800 offshore rocks, reefs and islands stretching from Cape Flattery to Copalis Head, except for those that are part of designated Native American reservations.

“Because of the fragile and remote nature of the refuge, all the islands are closed to human disturbance,” the U.S. Fish and Wildlife Service notes. “A 200-yard buffer surrounds each island to protect the wildlife. However the refuges and their inhabitants may be viewed with binoculars or spotting scopes from several beaches along the coast, including Shi Shi, Cape Alava, Rialto, Second, Ruby and Kalaloch.”

# EVENTS

JUNE

## THE PORT TOWNSEND FARMERS MARKET

Open from 9 a.m. to 2 p.m. every Saturday, on the 600 block of Tyler Street. The market's weekly live music program continues this season, plus monthly Storytime with the Port Townsend Public Library on the first Saturday of the month, as well as monthly culinary demonstrations on the third Saturday with local chefs.

## THE CHIMACUM FARMERS MARKET

Open 10 a.m. to 2 p.m. every Sunday on the grass at Chimacum Corner Farmstand.

Now in its 15<sup>th</sup> season, the market has more than 30 farm, artisan food, and art vendors from across Jefferson County who offer a wide variety of seasonal produce, food, and handcrafted arts.

## GALLERY WALK IN PORT TOWNSEND

First Saturday of every month, from 5 to 8 p.m. Enjoy new exhibitions and meet featured artists.

## THE BRASS SCREW CONSORTIUM STEAMPUNK FESTIVAL

Returns to Port Townsend on June 16 through June 17.

## QUILCENE GRAVEL UNRAVEL

Bon Jon Pass Out is 7:30 a.m. to 1 p.m. Saturday, June 17. Bicyclists can choose from three courses of varying length. The event promises an extraordinary ride with breathtaking views, wonderful friends, great food and a popular beer garden by the pond.

Get info at [peninsulaadventure.com/events/quilcene-gravel-unravel/bon-jon-pedal-bender/](https://peninsulaadventure.com/events/quilcene-gravel-unravel/bon-jon-pedal-bender/).

## TRINITY UNITED METHODIST'S CANDLELIGHT CONCERTS

Classical pianist Lino Rivera at 7 p.m. Thursday, June 22. Trinity United Methodist Church is located at 609 Taylor St., across from the Community Center, in Uptown.

## RAINSHADOW RECORDING

Welcome Jamie Stillway & Eric Skye to The Palindrome on Saturday, June 24.

The Palindrome is at Eaglemount Cidery, 1893 S. Jacob Miller Road, Port Townsend. Tickets are available online and at the door; [ticketstorm.com/e/28210/t/](https://ticketstorm.com/e/28210/t/).

## PORT TOWNSEND SUMMER BAND

Playing at 1 p.m. Sunday, June 25, on the Chetzemoka Park lawn, Port Townsend.

## CENTRUM PRESENTS VOICE WORKS FACULTY SHOWCASE

1 at 7:30 p.m. Thursday, June 29 in Wheeler Theater at Fort Worden State Park.

Performers include Nikki Dee, Yosef Tucker, Khari Wendell McClelland, Bridge Hill Kennedy, Moira Smiley, and Caleb Klaunder and Reeb Willms.

Standout singers. Centrum presents Voice Works Faculty Showcase 2 at 7:30 p.m. Friday, June 30 in Wheeler Theater at Fort Worden State Park.

Performers include Pharis and Jason Romero, Karin Plato, Eli West, Grace Love, Johnny Nicholas, and Mara Kaye and Tim McNalley.





# JULY

## THE PORT TOWNSEND FARMERS MARKET

Open from 9 a.m. to 2 p.m. every Saturday, on the 600 block of Tyler Street. The market's weekly live music program continues this season, plus monthly Storytime with the Port Townsend Public Library on the first Saturday of the month, as well as monthly culinary demonstrations on the third Saturday with local chefs.

## THE CHIMACUM FARMERS MARKET

Open 10 a.m. to 2 p.m. every Sunday on the grass at Chimacum Corner Farmstand.

Now in its 15<sup>th</sup> season, the market has more than 30 farm, artisan food, and art vendors from across Jefferson County who offer a wide variety of seasonal produce, food, and handcrafted arts.

## GALLERY WALK IN PORT TOWNSEND

First Saturday of every month, from 5 to 8 p.m. Enjoy new exhibitions and meet featured artists.

## FIDDLES ON THE FOURTH

Returns to Fort Worden State Park at 1:30 p.m. Tuesday, July 4.

Performers at McCurdy Pavilion

include Geoff Seitz and Jim Nelson, Liette Remon and Paul Marchand, and a special secret guest set by the Cláudio Rabeca Band.

## THE PORT TOWNSEND SUMMER BAND

Playing at 6 p.m. Tuesday, July 4, at Pope Marine Plaza, Port Townsend.

## RAINSHADOW RECORDING

Presents John Fullbright at The Palindrome on Thursday, July 6.

The Palindrome is at Eaglemount Cidery, 1893 S. Jacob Miller Road, Port Townsend. Tickets are available online and at the door; [ticketstorm.com/e/28212/t/](https://ticketstorm.com/e/28212/t/).

## CENTRUM PRESENTS FREE FRIDAYS AT THE FORT

From noon to 1 p.m. from July 7 through Aug. 4.

The popular lunchtime concert series will be held on the lawn of the Nora Porter Commons at Fort Worden State Park.

Bring a lawn chair or blanket, a picnic lunch – or stop by the Fort Worden Commons to grab something before the show. In the rare event of inclement weather, alternative plans will be posted on the Centrum website.

## FIDDLES TUNES FRIDAY

7:30 p.m. Friday, July 7 in McCurdy Pavilion at Fort Worden State Park.

The line-up features Alasdair White, Good & Young, George Wilson and Selma Kaplan, and Foghorn Stringband.



**John Wayne's**  
WATERFRONT RESORT  
SEQUIM BAY WASHINGTON U.S.A.  
RUSTIC CABINS & RV PARK  
EST. 1979

**CABINS, RV SPACES, TENTS & GIFT SHOP**

2634 West Sequim Bay Rd, Sequim, WA 98382 360-681-DUKE  
[www.johnwayneswaterfrontresort.com](http://www.johnwayneswaterfrontresort.com)



### **FIDDLE TUNES FINALE**

1:30 p.m. Saturday, July 8 in McCurdy Pavilion at Fort Worden State Park.

Performers include Phil and Russ Tanner, The Skillet Lickers from Georgia; Katie Shore and Connor Forsyth, Western Swing from Texas; Allison de Groot and Tatiana Hargreaves; and the Savoy Family Band.

### **UP, UP, UP CIRCUS**

Coming to Worthington Park in Quilcene at 5 p.m. Saturday, July 8. A fun live performance by the fantastic troupe Up Up Up Circus troupe will be followed by a family movie under the stars. Free admission, popcorn, and parking courtesy of the Quilcene Historical Museum. Get info at [worthingtonparkquilcene.org](http://worthingtonparkquilcene.org).

### **CENTRUM WELCOMES DIANA KRALL IN CONCERT**

5 p.m. Monday, July 10 in McCurdy Pavilion at Fort Worden State Park.

The performances is a 50<sup>th</sup>

Anniversary Benefit Concert, with opening act, Pharis and Jason Romero.

### **GLOBAL HEAT**

Playing the Concerts on the Dock series on July 13.

The program of free outdoor music shows is held Thursdays at Pope Marine Park Plaza in downtown Port Townsend.

### **DISCOVERY BAY BREWING**

Welcomes The Elderberries at 4 p.m. Saturday, July 15.

A classic rock cover band, The Elderberries consists of five band members, all residents of Kala Point in Port Townsend. The band will play a wide range of classic rock, covering songs by Fleetwood Mack, Neil Young, Bonnie Raitt, Van Morrison, the Beatles, and many, many more.

Rainshadow Recording welcomes the Stephanie Schneiderman Trio, featuring Jenny Conlee of The Decemberists, The Palindrome on Saturday, July 15.

The Palindrome is at Eglemount Cidery, 1893 S. Jacob Miller Road, Port Townsend. Tickets are available online and at the door; [ticketstorm.com/e/28213/t/](http://ticketstorm.com/e/28213/t/).

### **RAINSHADOW RECORDING WELCOMES THE ALBERT LEE BAND WITH JOHN “GREYHOUND” MAXWELL TO THE PALINDROME ON WEDNESDAY, JULY 19.**

The Palindrome is at Eglemount Cidery, 1893 S. Jacob Miller Road, Port Townsend. Tickets are available online and at the door; [ticketstorm.com/e/28211/t/](http://ticketstorm.com/e/28211/t/).

### **WEPA WILL PERFORM AT PORT TOWNSEND’S CONCERTS ON THE DOCK SERIES ON JULY 20.**

The program of free outdoor music shows is held Thursdays at Pope Marine Park Plaza in downtown Port Townsend.

### **THE SHIFT IS THE FEATURED PERFORMER ON JULY 27 AT PORT TOWNSEND’S CONCERTS ON THE DOCK SERIES.**

The program of free outdoor music shows is held Thursdays at Pope Marine Park Plaza.

### **TRINITY UNITED METHODIST’S CANDLELIGHT CONCERTS PRESENTS THE SUMMERTIME SINGERS**

A mixed choral group, at 7 p.m. Thursday, July 27. Trinity United Methodist Church is located at 609 Taylor St., across from the Community Center, in Uptown.

### **CENTRUM PRESENTS JAZZ FRIDAY EVENING**

7:30 p.m. Friday, July 28 at McCurdy Pavilion in Fort Worden State Park.

The first set features Sachal Vasandani, vocal; Rene Marie, vocal; Dawn Clement, piano; Martin Wind, bass; and Matt Wilson, drums.

The second set presents David Sanchez, tenor; Terell Stafford, trumpet; Wycliffe Gordon, trombone; Randy Porter, piano; Marlon Martinez, bass; and Obed Calvaire, drums.

### **POCKET YACHTS**

Port Townsend hosts the Pocket

## AUGUST

Yacht Palooza, a free boat show, from 9 a.m. to 5 p.m. Saturday, July 29.

The boats will be shown in the Commons area of the Northwest Maritime Center, with more boats on the beach and anchored close by.

For details, go to [pocketyachters.com/port-townsend-pocket-yacht-palooza](http://pocketyachters.com/port-townsend-pocket-yacht-palooza).

### CENTRUM PRESENTS JAZZ SATURDAY AFTERNOON

1:30 p.m. Saturday, July 29 at McCurdy Pavilion in Fort Worden State Park.

The first set features Tia Fuller, alto; Terell Stafford, trumpet; George Cables, piano; John Clayton, bass; and Lewis Nash, drums.

The second set is “Chuck Deardorf Life Of Music Celebration,” with Jovino Santos Neto, piano; Ben Thomas, vibes; Tim Carey, bass; Mark Ivester, drums; Jeff Busch, percussion; Dawn Clement, piano; John Clayton, bass; and Matt Wilson, drums. “Home” featuring Hans Teuber, tenor; Jay Thomas, trumpet; Dawn Clement, piano; John Clayton, bass; and Gary Hobbs, drums.

The third set is music from the Centrum All Star Big Band.

### CENTRUM PRESENTS THE PROGRAM, JAZZ IN THE CLUBS

7:30 p.m. Saturday, July 29 at Fort Worden State Park.

Jazz Port Townsend faculty and participants will perform in intimate, club-like venues throughout Fort Worden. Clubs will include 204 Up North, 204 Up South, the Commons, USO Hall, and the Wheeler Theater.

Get details at [centrum.org](http://centrum.org).

### THE PORT TOWNSEND SUMMER BAND

Playing at 1 p.m. Sunday, July 30 on the Chetzemoka Park lawn, Port Townsend.

### CENTRUM PRESENTS JAZZ SUNDAY AFTERNOON

1:30 p.m. Sunday, July 30 at McCurdy Pavilion in Fort Worden State Park.

The first set features Miles Okazaki, guitar; Randy Porter, piano; Marlon Martinez, bass; and Matt Wilson, drums.

The second set presents the Matthew Whitaker Quintet.

### PT BLUES PRESENTS SPECIAL GUEST BOBBY RUSH

Solo acoustic concert later joined by a PT Blues All Star Band, at 8 p.m. Wednesday, Aug. 2 in McCurdy Pavilion at Fort Worden State Park.

Get details at [centrum.org](http://centrum.org).

### TOOLSHED COMBO

Performing in the Concerts on the Dock series on Aug. 3.

The program of free outdoor music shows is held Thursdays at Pope Marine Park Plaza in downtown Port Townsend.

### CENTRUM HOSTS BLUES IN THE CLUBS

7:30 p.m. Friday, Aug. 4 and Saturday, Aug. 5.

Blues in the Clubs is the signature experience of the Port Townsend Acoustic Blues Festival.

On Friday and Saturday night of festival week, the artist faculty perform in smaller, club settings, playing sets in all sorts of interesting combinations throughout Fort Worden State Park.

### THE PORT TOWNSEND FARMERS MARKET

Open from 9 a.m. to 2 p.m. every Saturday, on the 600 block of Tyler Street. The market’s weekly live music program continues this season, plus monthly Storytime with the Port Townsend Public Library on the first Saturday of the month, as well as monthly culinary demonstrations on the third Saturday with local chefs.



## THE CHIMACUM FARMERS MARKET

10 a.m. to 2 p.m. every Sunday on the grass at Chimacum Corner Farmstand.

Now in its 15th season, the market has more than 30 farm, artisan food, and art vendors from across Jefferson County who offer a wide variety of seasonal produce, food, and handcrafted arts.

## CENTRUM WILL PRESENT A BLUES SHOWCASE CONCERT

1:30 p.m. Saturday, Aug. 5 in McCurdy Pavilion at Fort Worden State Park.

Artistic director Jontavious Willis has designed a showcase of blues and gospel tradition-bearers.

More than 20 artists from across the nation will perform. Artists include Andrew Alli, Benjamin Hunter, Chaz Leary, Corey Ledet, Dave Steele, Ethan Leinwand, George Aschmann, Hubby Jenkins, Ian Walters, Jay Hopp, Jerron Paxton, Jon Atkinson, Justin Golden,

Lloyd Buchanan, Mark Puryear, Mary Flower, Nick Pence, Pamela English, Phil Wiggins, Reverend Robert Jones, Rodrigo Mantovani, Shari Kane, Shirley Smith, and Jontavious Willis.

## GALLERY WALK IN PORT TOWNSEND

The first Saturday of every month, from 5 to 8 p.m. Enjoy new exhibitions and meet featured artists.

## UNCLE FUNK & THE DOPE SIX

Play on Aug. 10 at Concerts on the Dock.

The program of free outdoor music shows is held Thursdays at Pope Marine Park Plaza in downtown Port Townsend.

## THE JEFFERSON COUNTY FAIR

Aug. 11 through Aug. 13 at the county fairgrounds in Port Townsend. The annual event features 4-H exhibits and animals,

food vendors, competitions, and entertainment. Get info at [jeffcofairgrounds.com/fair](http://jeffcofairgrounds.com/fair).

## QUILCENE HISTORICAL MUSEUM'S 14<sup>th</sup> ANNUAL TASTING GALA

5 to 8 p.m. Friday, Aug. 11. The much-loved event has a fun new theme each year. Dress up or come as you are, the more the merrier and new friends are always welcome to this community favorite. Attendance is limited to age 21 and up. Find live entertainment, many of your favorite local artisans, as well as various vintners, brewers, and food vendors to round out the occasion.

Get info at [worthingtonparkquilcene.org](http://worthingtonparkquilcene.org).

## THE PORT TOWNSEND SUMMER BAND

Playing at 2 p.m. Saturday, Aug. 12 at the Jefferson County Fair.

## RAINSHADOW RECORDING PRESENTS JACK MCMAHON AND JOHN BUNZOW

At The Palindrome on Saturday, Aug. 12.

The Palindrome is at Eaglemount Cidery, 1893 S. Jacob Miller Road, Port Townsend. Tickets are available online and at the door; [ticketstorm.com/e/28214/t/](http://ticketstorm.com/e/28214/t/).

## CONCERTS ON THE DOCK WELCOMES THE COSMOPHONICS WITH NORTH BEACH AND TRUE RECKONING ON AUG. 17.

The program of free outdoor music shows is held Thursdays at Pope Marine Park Plaza in downtown Port Townsend.



**RAINSHADOW  
RECORDING WELCOMES  
STEVE GRIMES THE  
PALINDROME ON AUG. 18.**

The Palindrome is at Eaglemount Cidery, 1893 S. Jacob Miller Road, Port Townsend. Tickets are available online and at the door; [ticketstorm.com/e/28215/t/](http://ticketstorm.com/e/28215/t/).

**PIGS ON THE WING**

Performing two shows in Port Townsend at 8:30 p.m. Friday, Aug. 18 and Saturday, Aug. 19 at the American Legion Hall.

Pigs on the Wing is the Northwest's premier live tribute to Pink Floyd.

Friday's show is a Pink Floyd retrospective, with two sets of deep cuts and hits from "Piper at the Gates of Dawn," "Meddle," "The Dark Side of The Moon," "Animals," "The Wall" and more.

Saturday's show is a 50<sup>th</sup> anniversary tribute to "The Dark Side of the Moon," with the band playing the album in its entirety plus a full second set of classic Floyd.

Admission is 21 and older. Single-night tickets are \$30 in advance and \$35; two-night tickets are \$50.

**THE UPTOWN CRAFTS FAIR**

The fair returns to Port Townsend from 10 a.m. to 5 p.m. Saturday, Aug. 19 at Tyler and Lawrence streets.

The fair features crafts, arts activities, nonprofit booths, and more.

**TRINITY UNITED  
METHODIST'S  
CANDLELIGHT CONCERTS  
PRESENTS FOLK  
AMERICANA GUITARIST  
CLAY BARTLETT AT 7 P.M.  
THURSDAY, AUG. 24.**

Trinity United Methodist Church is located at 609 Taylor St., across from the Community Center, in Uptown.

**CONCERTS ON THE DOCK  
PRESENTS OLYMPIC  
EXPRESS BIG BAND ON  
AUG. 24.**

The program of free outdoor music shows is held Thursdays at Pope Marine Park Plaza in downtown Port Townsend.

**THE 54<sup>th</sup> ANNUAL PORT  
TOWNSEND KIWANIS  
CLASSIC CAR SHOW**

Saturday, Aug. 26 at Memorial Field in Port Townsend. Cars, trucks and motorcycles of all vintages are welcome.

Get details at [port-townsend.kiwanisone.org/Page/14919](http://port-townsend.kiwanisone.org/Page/14919).

**SOUNDCHECK MUSIC &  
ARTS FESTIVAL**

Coming to Port Townsend from Thursday, Aug. 17 through Sunday, Aug. 20. The locally-focused multidisciplinary arts festival features four days of music, dance, poetry, film and more. Get details at [ptsoundcheck.com](http://ptsoundcheck.com).

**THING FESTIVAL 2023**

THING returns to Fort Worden from Aug. 25 through Aug. 27.

Hailed as "WA's best destination festival" by the Seattle Times, THING is an eclectic and intimate three-day festival of music and arts.

The festival features a tightly curated lineup of diverse performers with an emphasis on fresh discoveries and a vision to create an environment where all are welcomed and represented. [thingnw.org](http://thingnw.org)

**THE PORT TOWNSEND  
SUMMER BAND WILL PLAY  
AT 1 P.M. SUNDAY, AUG. 27  
AT POPE MARINE PARK,  
PORT TOWNSEND.**

**KEVIN MASON & THE PT  
ALL STARS WILL CLOSE  
OUT THE CONCERTS ON  
THE DOCK SERIES WITH A  
SHOW ON AUG. 31.**

The program of free outdoor music shows is held Thursdays at Pope Marine Park Plaza in downtown Port Townsend.

**SEPTEMBER**

**THE PORT TOWNSEND  
FARMERS MARKET**

Open from 9 a.m. to 2 p.m. every Saturday, on the 600 block of Tyler Street. The market's weekly live music program continues this season, plus monthly Storytime with the Port Townsend Public Library on the first Saturday of the month, as well as monthly culinary demonstrations on the third Saturday with local chefs.

Gallery walk in Port Townsend is the first Saturday of every month, from 5 to 8 p.m. Enjoy new exhibitions and meet featured artists.

**THE CHIMACUM FARMERS  
MARKET**

10 a.m. to 2 p.m. every Sunday on the grass at Chimacum Corner Farmstand.

Now in its 15<sup>th</sup> season, the market has more than 30 farm, artisan food, and art vendors from across Jefferson County who offer a wide variety of seasonal produce, food, and handcrafted arts.



**THE 2023 PORT TOWNSEND WOODEN BOAT FESTIVAL**

Sept. 8 through Sept. 10. Learn from the experts, swap stories with fellow wooden boat aficionados, and explore the richness of our maritime culture. Get tickets and info at [woodenboat.org](http://woodenboat.org).

**CRAFTS BY THE DOCK**

Returning to Port Townsend on Saturday, Sept. 9 and Sunday, Sept. 10. Hours are 10 a.m. to 6 p.m. Saturday, and 10 a.m. to 5 p.m. Sunday.

**RAINSHADOW RECORDING WELCOMES JIM PAGE TO THE PALINDROME ON SATURDAY, SEPT. 16.**

The Palindrome is at Eglemount Cidery, 1893 S. Jacob Miller Road, Port Townsend. Tickets are available online and at the door; [ticketstorm.com/e/28216/t/](http://ticketstorm.com/e/28216/t/).

**THE QUILCENE FAIR & PARADE RETURNS ON SATURDAY, SEPT. 16.**

The car show and vendor displays will be from 10 a.m. to 3 p.m. The parade starts at 11 a.m. and will be followed by live music entertainment from noon to 2 p.m.

**THE JEFFERSON COUNTY FARM TOUR**

Saturday Sept. 16 and Sunday, Sept. 17. Farms participating in the tour are located in and around Port Townsend, Marrowstone Island, Discovery Bay, Chimacum, Port Ludlow, Quilcene, and Brinnon.

**RAINSHADOW RECORDING WELCOMES MURIEL ANDERSON TO THE PALINDROME ON TUESDAY, SEPT. 19.**

The Palindrome is at Eglemount Cidery, 1893 S. Jacob Miller Road, Port Townsend. Tickets are available online and at the door; [ticketstorm.com/e/28217/t/](http://ticketstorm.com/e/28217/t/).

**DEPARTURE FEST NW 2023**

Returning to the Lake Leland Amphitheater in Quilcene from Sept. 22 through Sept. 24.

Departure Fest NW is a three-day music festival with camping, world-class musical performances, Pacific Northwest craft vendors, and food.

Featured artists include WookieFoot, Nattali Rize, Torin Frost & Patterns of Saturn, Kalan Wolfe & The Shift, Elias Alexander (Rambler), Max Ribner, Sierra Marin, Jus Wright, Aaron Hale & The Human Beings, Locust Street Taxi, Three Wheels Turning, Lujah, Ember Brightheart, DJ Lunch Lady, and storytelling with Aimee Ringle.

**TRINITY UNITED METHODIST'S CANDLELIGHT CONCERTS PRESENTS CLASSICAL VIOLINIST CAITLIN KELLY AT 7 P.M. THURSDAY, SEPT. 28.**

Trinity United Methodist Church is located at 609 Taylor St., across from the Community Center, in Uptown.

## OCTOBER

**THE PORT TOWNSEND FARMERS MARKET**

Open from 9 a.m. to 2 p.m. every Saturday, on the 600 block of Tyler Street. The market's weekly live music program continues this season, plus monthly Storytime with the Port Townsend Public Library on the first Saturday of the month, as well as monthly culinary demonstrations on the third Saturday with local chefs.

**GALLERY WALK IN PORT TOWNSEND**

First Saturday of every month, from 5 to 8 p.m. Enjoy new exhibitions and meet featured artists.

**THE CHIMACUM FARMERS MARKET**

10 a.m. to 2 p.m. every Sunday on the grass at Chimacum Corner Farmstand.

Now in its 15<sup>th</sup> season, the market has more than 30 farm, artisan food, and art vendors from across Jefferson County who offer a wide variety of seasonal produce, food, and handcrafted arts.

**THE GREAT PORT TOWNSEND BAY KINETIC SKULPTURE RACE**

Returning Oct. 7-Oct. 8 to Port Townsend.

Attempts to marry art and transportation produce hilarious results as kooky, ingenious contraptions try to race the course and strive for mediocrity. Visit [ptkineticrace.org](http://ptkineticrace.org).

**RAINSHADOW RECORDING PRESENTS CLAUDIA SCHMIDT AT THE PALINDROME ON SATURDAY, OCT. 14.**

The Palindrome is at Eaglemount Cidery, 1893 S. Jacob Miller Road, Port Townsend. Tickets are available online and at the door; The Palindrome is at Eaglemount Cidery, 1893 S. Jacob Miller Road, Port Townsend. Tickets are available online and at the door; [ticketstorm.com/e/28218/t/](http://ticketstorm.com/e/28218/t/).

**RAINSHADOW RECORDING WELCOMES MICHAEL FRACASSO WITH BETTY SOO TO THE PALINDROME ON THURSDAY, OCT. 19.**

The Palindrome is at Eaglemount Cidery, 1893 S. Jacob Miller Road, Port Townsend. Tickets are available online and at the door; [ticketstorm.com/e/28219/t/](http://ticketstorm.com/e/28219/t/).

## NOVEMBER

**GALLERY WALK IN PORT TOWNSEND**

First Saturday of every month, from 5 to 8 p.m. Enjoy new exhibitions and meet featured artists.

**RAINSHADOW RECORDING WELCOMES THE BLACK FEATHERS TO THE PALINDROME ON THURSDAY, NOV. 9.**

The Palindrome is at Eaglemount Cidery, 1893 S. Jacob Miller Road, Port Townsend. Tickets are available online and at the door; [ticketstorm.com/e/28220/t/](http://ticketstorm.com/e/28220/t/).

**THE PORT TOWNSEND SUMMER BAND WILL PLAY A VETERANS DAY CONCERT FRIDAY, NOV. 10 AT AMERICAN LEGION HALL.**

# EVENTS

## TRINITY UNITED METHODIST'S CANDLELIGHT CONCERTS

Presenting Kozmopolis, folk music from around the world, at 7 p.m. Thursday, Nov. 16.

Trinity United Methodist Church is located at 609 Taylor St., across from the Community Center, in Uptown.

## THE HOLIDAY CRAFT SALE IN PORT TOWNSEND

Held on Black Friday and Small Business Saturday following Thanksgiving, comes to Uptown from 10 a.m. to 5 p.m. Friday, Nov. 24 and Saturday, Nov. 25. Dive into the holiday season with locally made arts and crafts.

The sale is at the Port Townsend Community Center at 620 Tyler St.

## DECEMBER

## GALLERY WALK IN PORT TOWNSEND

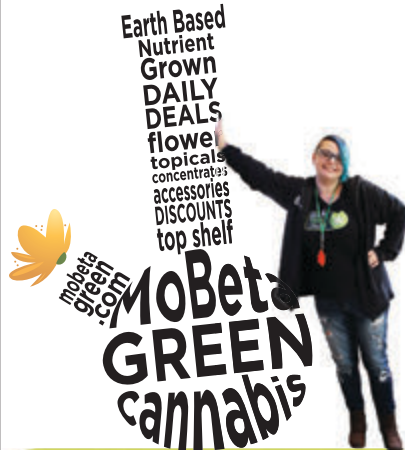
First Saturday of every month, from 5 to 8 p.m. Enjoy new exhibitions and meet featured artists.

## TRINITY UNITED METHODIST'S CANDLELIGHT CONCERTS PRESENTS THE CHORAL BELLES WITH AN ALL WOMEN'S CHORAL CHRISTMAS CONCERT AT 7 P.M. THURSDAY, DEC. 14.

Trinity United Methodist Church is located at 609 Taylor St., across from the Community Center, in Uptown.

## Tracy Says...

"Getaway  
from all your stress and pain with  
Mo Beta!"



### Accepting Debit Cards

8962 Beaver Valley Road, Chimacum  
(360) 379-4689 • mobetagreen.com

21+  
ONLY

Our products have intoxicating effects and may be habit forming. Marijuana can impair concentration, coordination and judgment. Do not operate a vehicle or machinery under the influence of this drug. There may be health risks associated with the consumption of these products. For use only by adults twenty-one and older, keep out of reach of children.

## NEED A GETAWAY?

Explore some of the  
most beautiful wildlife  
and views all from the  
comfort of your car!



1423 Ward Road Sequim, WA  
olygamefarm.com  
1-800-778-4295  
(360) 683-4295



Find out how • [www.ptleader.com](http://www.ptleader.com)



# Miss us already?

Visit anytime at [ptleader.com](http://ptleader.com)  
Jefferson County's No. 1 news source

Scan to claim  
a discounted  
subscription  
with code  
GETAWAY23



# SEPTEMBER 16

## Quilcene Fair & Parade

### 10AM TO 3PM

KIDS CARNIVAL - EXHIBIT HALL - RAFFLE  
VENDORS - PARADE - CAR SHOW  
@11AM



**LIVE MUSIC:**  
**KALAN WOLFE & THE SHIFT**  
**THE BUCK ELLARD BAND**  
**HARMONICA POCKET**

FREE ADMISSION! ALL AGES EVENT!



Car  
Show

Find us on 

QUILCENEFAIR.ORG



Our First Fed team is excited to help you navigate your options on the path to financial well-being. Visit us online or in a branch!

**Bainbridge Island**  
323 NE High School Rd, #7

**Ferndale**  
1860 Main St

**Port Townsend**  
1321 Sims Way

**Bellevue**  
1100 Bellevue Way NE, Unit 6

**Forks**  
131 Calawah Way

**Sequim Avenue**  
333 North Sequim Avenue

**Bellingham Barkley**  
1270 Barkley Boulevard

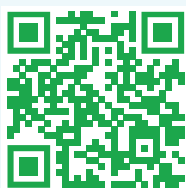
**Port Angeles - Eastside**  
1603 E First Street

**Sequim Village**  
1201 W Washington Street

**Bellingham Fairhaven**  
1215 12th Street, Suite 105

**Port Angeles - Sixth Street**  
227 E Sixth Street

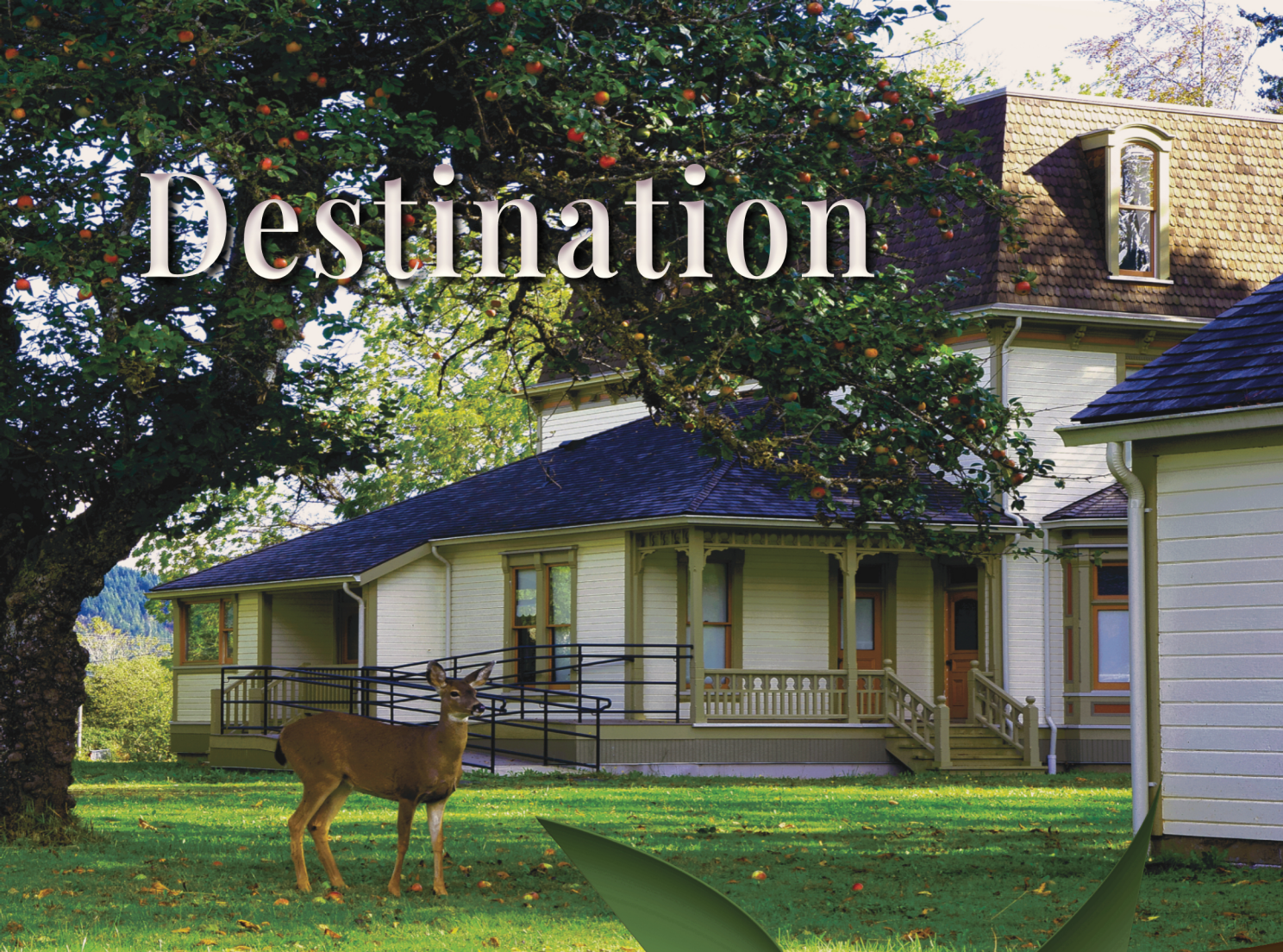
**Silverdale**  
3035 NW Bucklin Hill Road



Scan the code to check out our CD Specials,  
visit [ourfirstfed.com/rates](https://ourfirstfed.com/rates),  
or call us at 800-800-1577.



# Destination



  
WORTHINGTON PARK  
QUILCENE, WASHINGTON

MAKE A DATE ON A COUNTRY ESTATE

*At the foot of the Olympic Mountains*

WORTHINGTONPARKQUILCENE.ORG

A property of the Quilcene Historical Museum, a 501(c)3